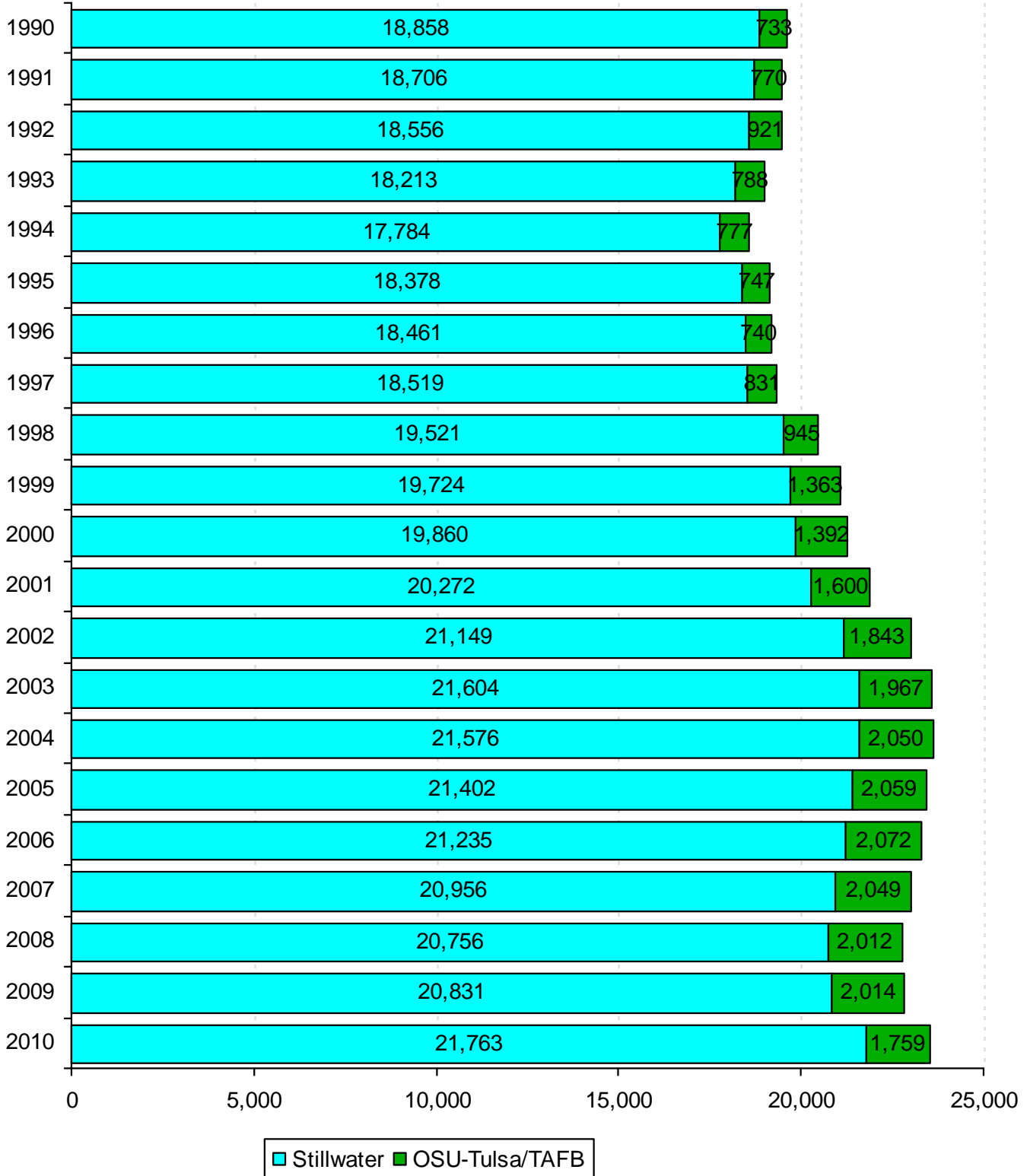


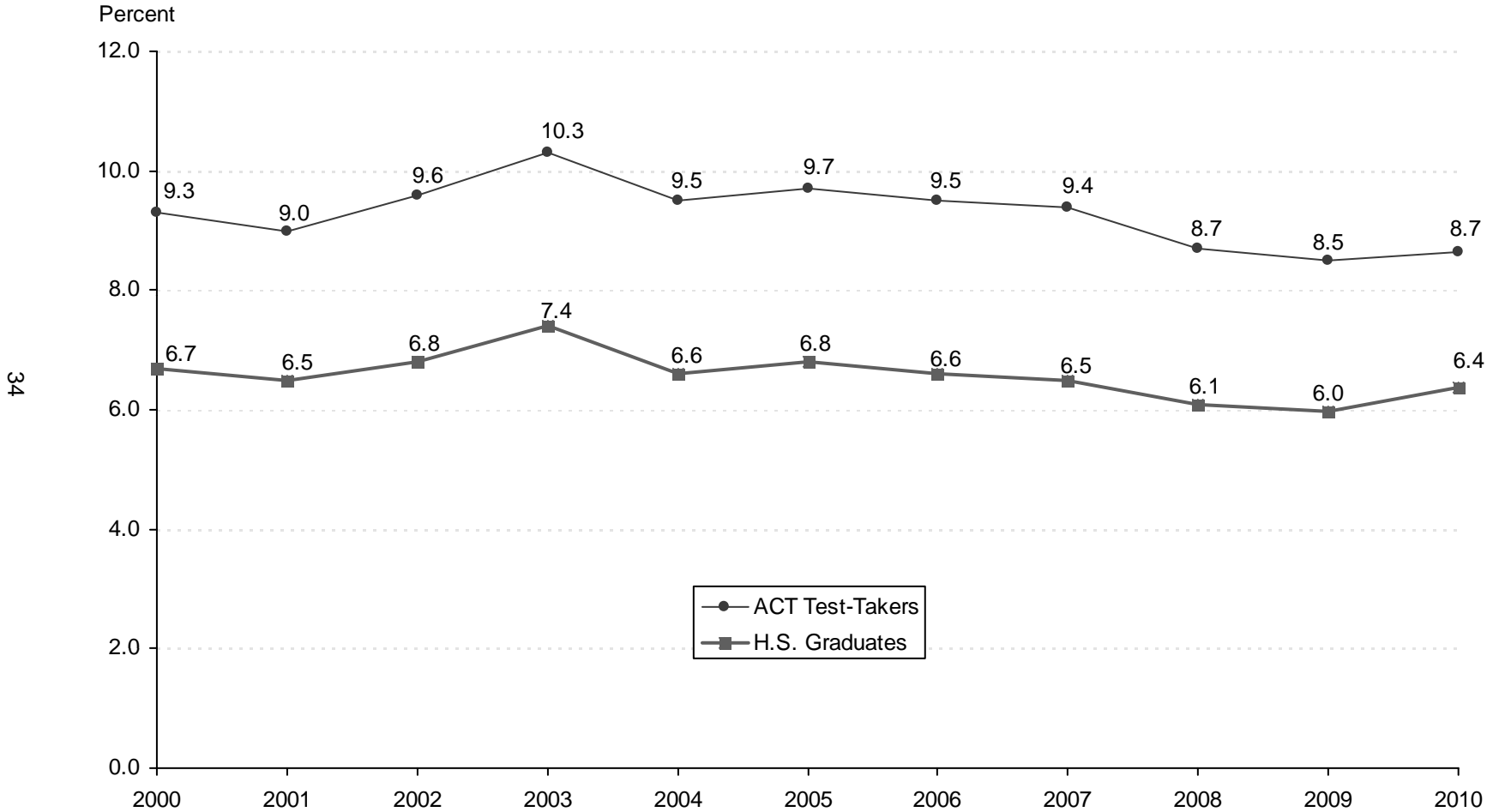
# ENROLLMENT TRENDS



**STILLWATER AND TULSA CAMPUS ENROLLMENT**  
**OKLAHOMA STATE UNIVERSITY**  
**FALL SEMESTERS 1990 THROUGH 2010**



**OKLAHOMA STATE UNIVERSITY SHARE OF THE MARKET  
RATIO OF BEGINNING RESIDENT FRESHMEN  
TO OKLAHOMA HIGH SCHOOL SPRING GRADUATES AND ACT TEST-TAKERS  
OKLAHOMA STATE UNIVERSITY  
FALL SEMESTERS 2000 THROUGH 2010**



*Note:* Total Oklahoma high school graduates for 2010 = 38,522; total Oklahoma ACT test-takers = 28,343. The beginning resident freshman count for all years include OSU-Tulsa students, but excludes non-degree-seeking and first time concurrent high school resident students. (See Page 43).

*Source:* Oklahoma High School Graduates-Projections, Oklahoma State Regents for Higher Education, and ACT Profile Report – State, Graduating Class 2010, Oklahoma.

**ENROLLMENT BY TYPE OF ADMISSION  
OKLAHOMA STATE UNIVERSITY  
FALL SEMESTERS 2000 THROUGH 2010**

Fall	New Freshmen*	% Inc / Dec	Continuing	% Inc / Dec	Readmission	% Inc / Dec	New Transfer	% Inc / Dec	Non-Degree	% Inc / Dec	Concurrent	% Inc / Dec	Total	% Inc / Dec
2000	3,013		14,501		971		2,272		135		68		<b>20,960</b>	
2001	3,103	3.0%	14,933	3.0%	961	-1.0%	2,363	4.0%	153	13.3%	70	2.9%	<b>21,583</b>	<b>3.0%</b>
2002	3,201	3.2%	15,753	5.5%	1,089	13.3%	2,506	6.1%	84	-45.1%	67	-4.3%	<b>22,700</b>	<b>5.2%</b>
2003	3,430	7.2%	16,106	2.2%	941	-13.6%	2,675	6.7%	54	-35.7%	68	1.5%	<b>23,274</b>	<b>2.5%</b>
2004	3,264	-4.8%	16,274	1.0%	874	-7.1%	2,764	3.3%	87	61.1%	67	-1.5%	<b>23,330</b>	<b>0.2%</b>
2005	3,315	1.6%	16,180	-0.6%	780	-10.8%	2,754	-0.4%	80	-8.0%	56	-16.4%	<b>23,165</b>	<b>-0.7%</b>
2006	3,236	-2.4%	16,189	0.1%	648	-16.9%	2,789	1.3%	57	-28.8%	80	42.9%	<b>22,999</b>	<b>-0.7%</b>
2007	3,209	-0.8%	16,016	-1.1%	590	-9.0%	2,715	-2.7%	69	21.1%	94	17.5%	<b>22,693</b>	<b>-1.3%</b>
2008	3,073	-4.2%	15,812	-1.3%	621	5.3%	2,658	-2.1%	192	178.3%	93	-1.1%	<b>22,449</b>	<b>-1.1%</b>
2009	3,148	2.4%	15,564	-1.6%	709	14.2%	2,852	7.3%	164	-14.6%	79	-15.1%	<b>22,516</b>	<b>0.3%</b>
2010	3,554	12.9%	15,899	2.2%	508	-28.3%	3,005	5.4%	124	-24.4%	88	11.4%	<b>23,178</b>	<b>2.9%</b>

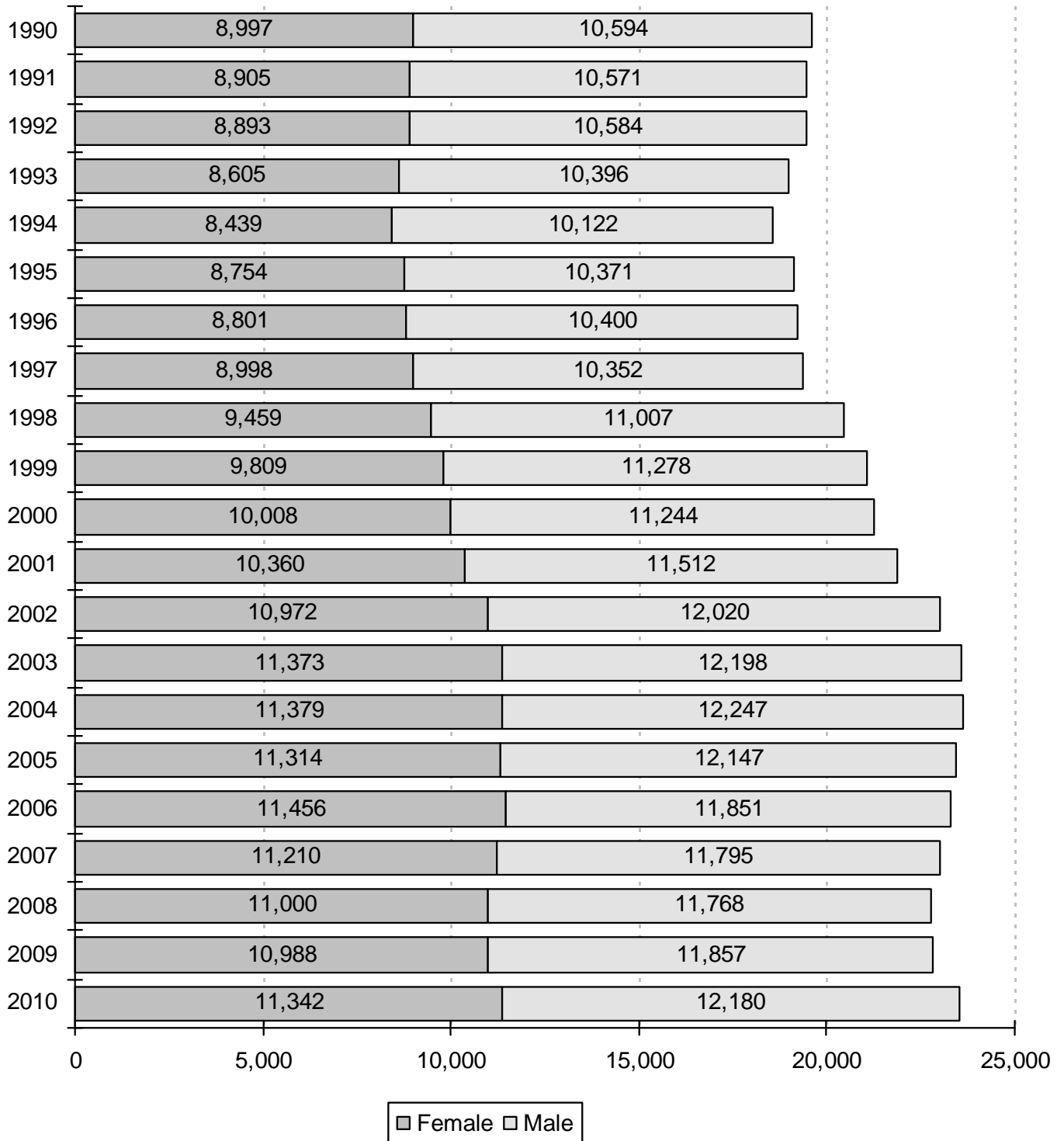
35

Note: This table excludes 344 professional students for Fall 2010. However, this table does include OSU-Tulsa figures for all years listed and will not match the figures for this page in the Student Profile books prior to Fall 2003. The percentage increase or decrease in enrollment between two semesters is shown in the "% Inc / Dec" column. Example: There was a 12.9% increase in enrollment of new freshmen from Fall 2009 to Fall 2010.

\* New freshmen counts exclude concurrent high school students and non-degree-seeking students for all years listed.

Student Profile books prior to Fall 2006 include new concurrent high school students in the new freshmen counts.

**ENROLLMENT BY GENDER**  
**OKLAHOMA STATE UNIVERSITY**  
**FALL SEMESTERS 1990 THROUGH 2010**



*Note:* This chart includes professional students and OSU-Tulsa students for all years listed. Hence, these figures will not match the figures in the Student Profile books prior to 2003.

**ENROLLMENT BY CLASSIFICATION  
OKLAHOMA STATE UNIVERSITY  
FALL SEMESTERS 1990 THROUGH 2010**

Year	Freshmen	Sophomores	Juniors	Seniors	Special Undergrads	Graduates	Professional	On-Campus Total	Off-Campus OSU-T & TAFB	Grand Total
1990	3,526	3,787	3,693	4,037	0	3,561	254	18,858	733	19,591
1991	3,321	3,431	3,996	4,102	3	3,601	252	18,706	770	19,476
1992	3,251	3,294	3,678	4,285	20	3,759	269	18,556	921	19,477
1993	3,161	3,200	3,727	4,195	22	3,636	272	18,213	788	19,001
1994	3,187	3,034	3,612	4,215	41	3,424	271	17,784	777	18,561
1995	3,446	3,040	3,646	4,273	34	3,664	275	18,378	747	19,125
1996	3,427	3,226	3,508	4,311	47	3,658	284	18,461	740	19,201
1997	3,378	3,308	3,683	4,168	68	3,625	289	18,519	831	19,350
1998	3,535	3,464	3,874	4,379	70	3,902	297	19,521	945	20,466
1999	4,068	3,543	3,923	4,235	45	3,616	294	19,724	1,363	21,087
2000	4,148	3,765	3,834	4,339	46	3,436	292	19,860	1,392	21,252
2001	4,361	3,886	3,925	4,234	51	3,526	289	20,272	1,600	21,872
2002	4,473	3,944	4,115	4,458	49	3,818	292	21,149	1,843	22,992
2003	4,649	4,083	4,197	4,548	14	3,816	297	21,604	1,967	23,571
2004	4,462	4,056	4,266	4,604	105	3,787	296	21,576	2,050	23,626
2005	4,325	4,035	4,391	4,736	97	3,522	296	21,402	2,059	23,461
2006	4,143	4,099	4,383	4,658	109	3,535	308	21,235	2,072	23,307
2007	4,034	3,977	4,262	4,602	133	3,636	312	20,956	2,049	23,005
2008	3,803	3,795	4,280	4,517	241	3,801	319	20,756	2,012	22,768
2009	3,905	3,598	4,134	4,653	210	4,002	329	20,831	2,014	22,845
2010	4,289	3,700	4,123	4,709	186	4,412	344	21,763	1,759	23,522

37

Note: Effective 2000, Off-Campus OSU-T & Tinker Air Force Base column reflects OSU-Tulsa enrollment only.

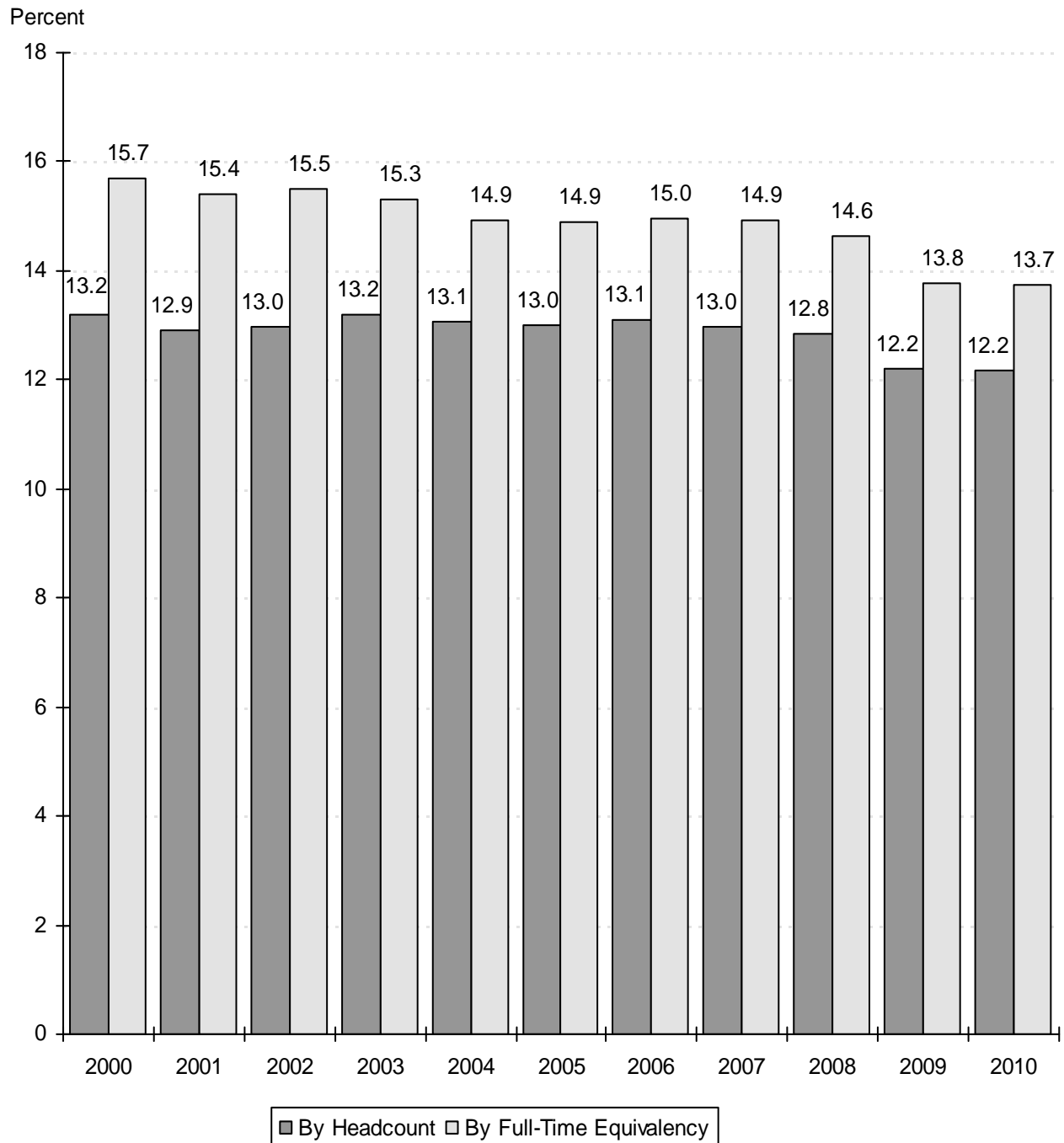
**ENROLLMENT BY ETHNICITY  
OKLAHOMA STATE UNIVERSITY  
FALL SEMESTERS 2000 THROUGH 2010**

38

Fall Semester	White		African American		Native American		Hispanic		Asian		International		Total
	Number	%	Number	%	Number	%	Number	%	Number	%	Number	%	
2000	16,507	77.7%	709	3.3%	1,555	7.3%	347	1.6%	366	1.7%	1,768	8.3%	<b>21,252</b>
2001	16,753	76.6%	720	3.3%	1,656	7.6%	400	1.8%	379	1.7%	1,964	9.0%	<b>21,872</b>
2002	17,475	76.0%	766	3.3%	1,784	7.8%	415	1.8%	375	1.6%	2,177	9.5%	<b>22,992</b>
2003	17,905	76.0%	778	3.3%	1,838	7.8%	444	1.9%	371	1.6%	2,235	9.5%	<b>23,571</b>
2004	17,943	75.9%	918	3.9%	1,896	8.0%	447	1.9%	389	1.6%	2,033	8.6%	<b>23,626</b>
2005	17,894	76.3%	917	3.9%	1,973	8.4%	523	2.2%	388	1.7%	1,766	7.5%	<b>23,461</b>
2006	17,769	76.2%	959	4.1%	1,990	8.5%	533	2.3%	411	1.8%	1,645	7.1%	<b>23,307</b>
2007	17,443	75.8%	923	4.0%	1,993	8.7%	525	2.3%	388	1.7%	1,733	7.5%	<b>23,005</b>
2008	17,172	75.4%	930	4.1%	1,964	8.6%	566	2.5%	386	1.7%	1,750	7.7%	<b>22,768</b>
2009	17,297	75.7%	929	4.1%	1,915	8.4%	555	2.4%	363	1.6%	1,786	7.8%	<b>22,845</b>
2010	17,599	74.8%	1,029	4.4%	2,032	8.6%	594	2.5%	399	1.7%	1,869	7.9%	<b>23,522</b>

Note: This table includes professional students and OSU-Tulsa students for all years listed. Student Profile books prior to Fall 2003 do not contain OSU-Tulsa students on this page.

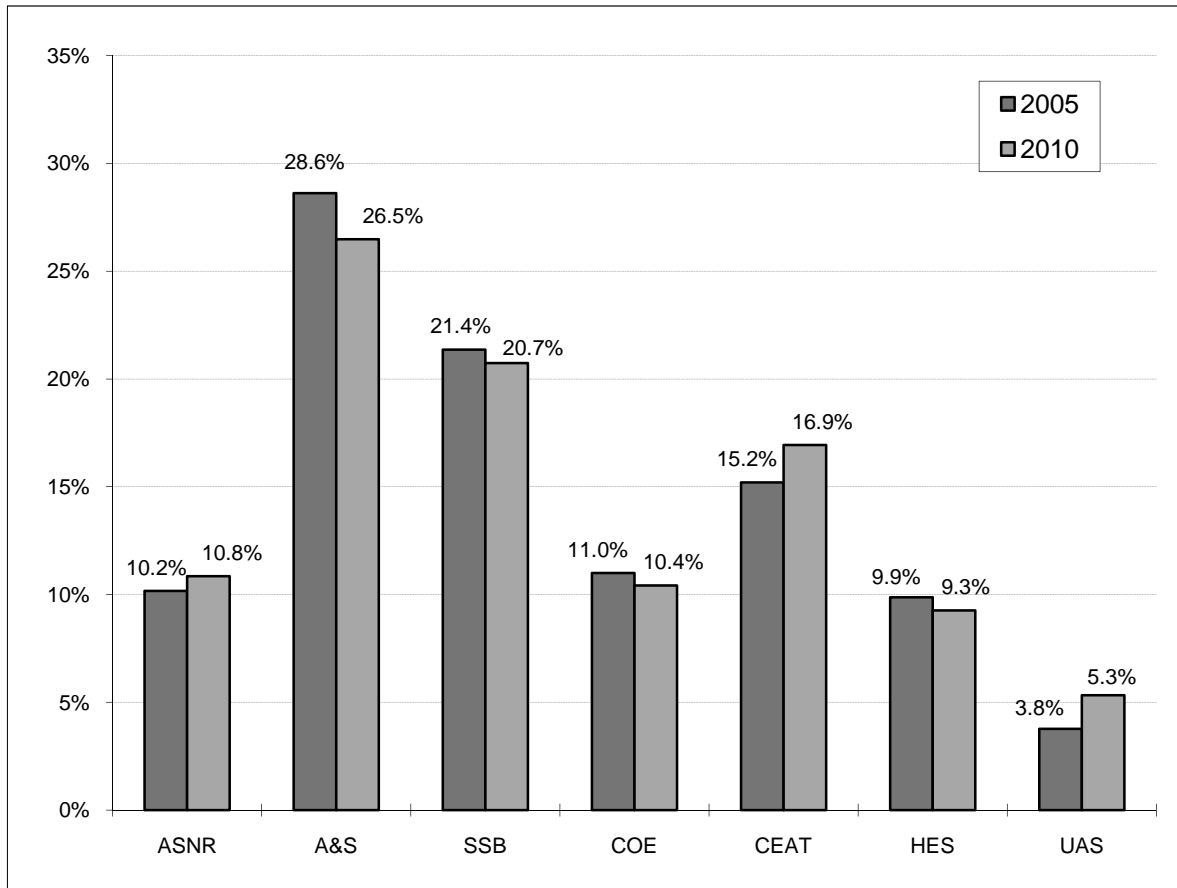
**OSU ENROLLMENT AS A PERCENT OF TOTAL ENROLLMENT  
IN THE OKLAHOMA STATE SYSTEMS (PUBLIC)  
OKLAHOMA STATE UNIVERSITY  
FALL SEMESTERS 2000 THROUGH 2010**



Source: Preliminary Enrollment Report for Oklahoma Higher Education Fall 2010,  
Oklahoma State Regents for Higher Education.

Note: Total Enrollment in the Oklahoma State Systems (Public) excludes interns and residents. Student Profile books prior to Fall 2008 included interns and residents in the total headcount enrollment.

**COMPARISON OF DISTRIBUTION OF UNDERGRADUATE MAJORS BY COLLEGE  
OKLAHOMA STATE UNIVERSITY  
FALL SEMESTERS 2005 AND 2010**



**UNDERGRADUATE MAJORS BY COLLEGE  
OKLAHOMA STATE UNIVERSITY  
FALL SEMESTERS 2005 THROUGH 2010**

Year	Ag. Sci. & Nat. Res.	Arts & Sciences	Spears Sch. of Bus.	Education	Engr., Arch., & Tech.	Human Envir. Sci.	Univ. Acad. Services	Total
2005	1,922	5,412	4,038	2,081	2,874	1,868	714	<b>18,909</b>
2006	1,829	5,352	4,010	2,039	2,804	1,911	792	<b>18,737</b>
2007	1,933	5,038	4,019	1,922	2,790	1,939	727	<b>18,368</b>
2008	1,907	4,857	3,927	1,911	2,780	1,823	781	<b>17,986</b>
2009	1,937	4,709	3,747	1,919	2,917	1,776	844	<b>17,849</b>
2010	1,974	4,817	3,773	1,896	3,081	1,685	971	<b>18,197</b>

Note: Students are reported in the college in which they are enrolled. This page includes students enrolled at OSU-Tulsa. Student Profile books prior to Fall 2003 do not contain OSU-Tulsa students on this page.

**ENROLLMENT CHANGES  
OKLAHOMA STATE UNIVERSITY  
FALL SEMESTERS 2005 AND 2010**

	2005	2010	% Change
<u>UNDERGRADUATE MAJORS</u>			
Agricultural Sciences & Natural Resources	1,922	1,974	2.7%
Arts & Sciences	5,412	4,817	-11.0%
Spears School of Business	4,038	3,773	-6.6%
Education	2,081	1,896	-8.9%
Engineering, Architecture, & Technology	2,874	3,081	7.2%
Human Environmental Sciences	1,868	1,685	-9.8%
University Academic Services	714	971	36.0%
<u>AGE</u>			
18 & Under	1,737	2,034	17.1%
19	3,077	3,158	2.6%
20	3,199	2,920	-8.7%
21	3,373	3,131	-7.2%
22	2,992	2,762	-7.7%
23-29	5,871	6,228	6.1%
30-39	1,903	2,039	7.1%
40 & Over	1,309	1,250	-4.5%
<u>CLASSIFICATION</u>			
New Freshmen	3,304	3,519	6.5%
Other Freshmen	1,034	773	-25.2%
Sophomores*	4,138	3,777	-8.7%
Juniors*	4,882	4,565	-6.5%
Seniors	5,417	5,351	-1.2%
Specials	587	617	5.1%
Graduates	3,803	4,576	20.3%
Professional	296	344	16.2%
<u>RESIDENT STATUS</u>			
In-State	18,127	16,951	-6.5%
Out-of-State	3,568	4,702	31.8%
International	1,766	1,869	5.8%
<u>ETHNICITY</u>			
White	17,894	17,599	-1.6%
African American	917	1,029	12.2%
Native American	1,973	2,032	3.0%
Hispanic	523	594	13.6%
Asian	388	399	2.8%
International	1,766	1,869	5.8%
<u>GENDER</u>			
Female	11,314	11,342	0.2%
Male	12,147	12,180	0.3%
<b>OVERALL ENROLLMENT</b>	<b>23,461</b>	<b>23,522</b>	<b>0.3%</b>

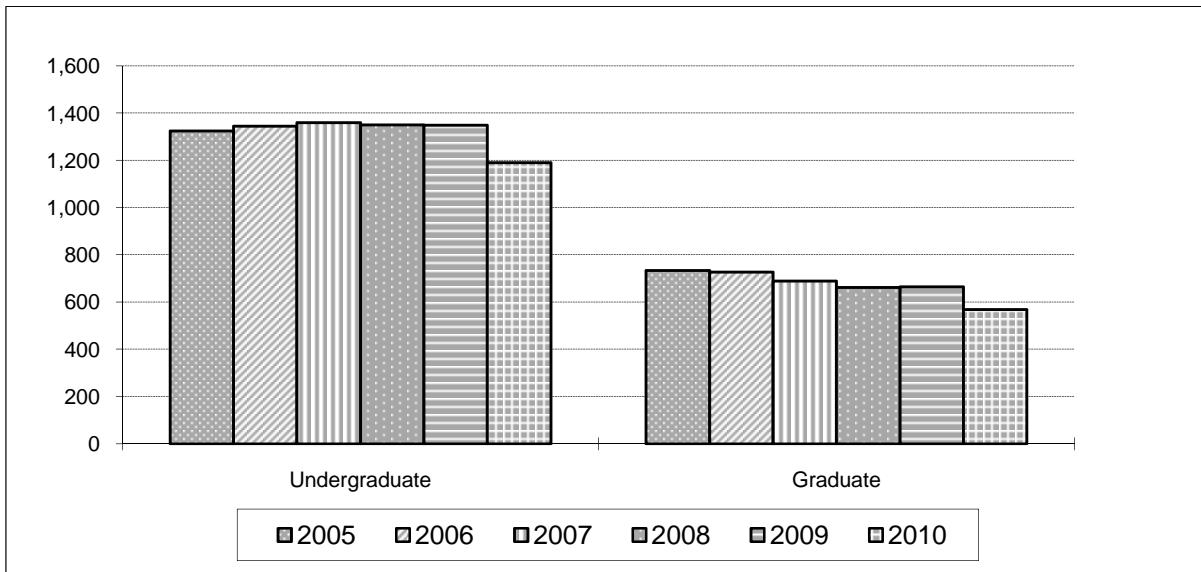
Note: This table includes professional students and OSU-Tulsa students. Student Profile books prior to Fall 2003 do not contain OSU-Tulsa students on this page.

\* 32 sophomores and 3 juniors for 2010 and 13 sophomores for 2005 are in their first year of college and thus listed in other tables as new freshmen.

\* Student Profile books prior to Fall 2003 include non-degree-seeking new freshmen in the New Freshmen counts

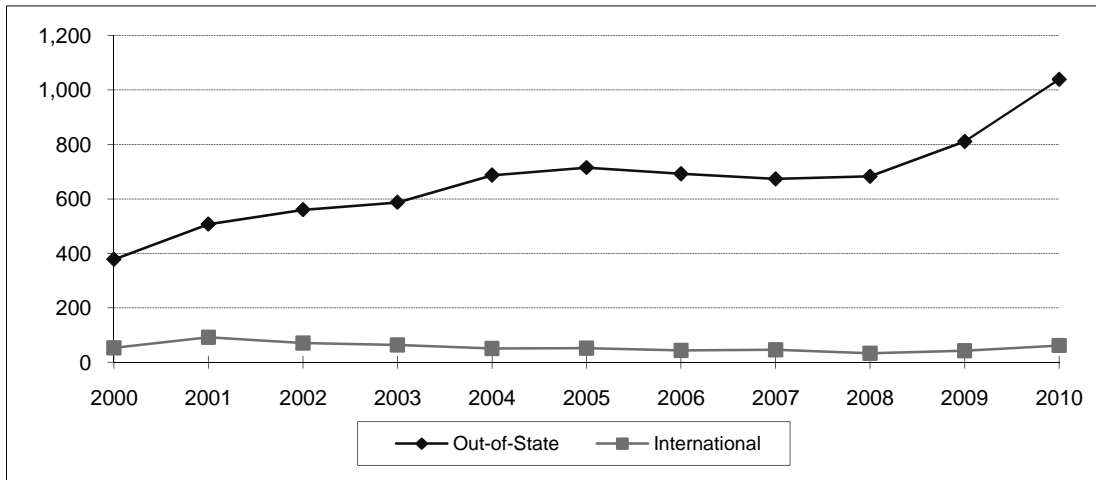
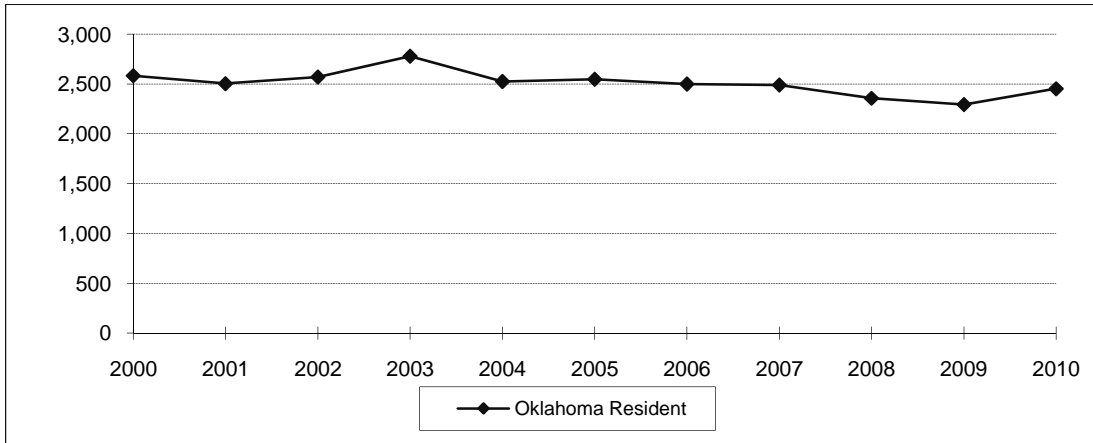
\* Student Profile books prior to Fall 2006 include new concurrent high school students in the New Freshmen counts.

**ENROLLMENT CHANGES  
OKLAHOMA STATE UNIVERSITY AT TULSA  
FALL SEMESTERS 2005 THROUGH 2010**



Classification	2005	2006	2007	2008	2009	2010	% Change 2009 to 2010
<b>Undergraduate</b>	<b>1,325</b>	<b>1,345</b>	<b>1,360</b>	<b>1,350</b>	<b>1,349</b>	<b>1,190</b>	<b>-11.8%</b>
Freshman	13	25	14	10	20	3	-85.0%
Sophomore	103	96	128	103	121	77	-36.4%
Junior	491	521	515	534	484	442	-8.7%
Senior	681	675	673	659	691	642	-7.1%
Special	37	28	30	44	33	26	-21.2%
<b>Graduate</b>	<b>734</b>	<b>727</b>	<b>689</b>	<b>662</b>	<b>665</b>	<b>569</b>	<b>-14.4%</b>
Special	199	191	160	143	164	119	-27.4%
Master	415	421	417	399	381	329	-13.6%
Doctorate	120	115	112	120	120	121	0.8%
<b>Grand Total</b>	<b>2,059</b>	<b>2,072</b>	<b>2,049</b>	<b>2,012</b>	<b>2,014</b>	<b>1,759</b>	<b>-12.7%</b>

**NEW FRESHMEN ENROLLMENT BY RESIDENCY  
OKLAHOMA STATE UNIVERSITY  
FALL SEMESTERS 2000 THROUGH 2010**



Fall Semester	Oklahoma Resident	Out-of-State	International	Total
2000	2,582	378	53	3,013
2001	2,504	507	92	3,103
2002	2,570	560	71	3,201
2003	2,779	587	64	3,430
2004	2,526	687	51	3,264
2005	2,548	715	52	3,315
2006	2,500	692	44	3,236
2007	2,490	673	46	3,209
2008	2,357	683	33	3,073
2009	2,294	811	43	3,148
2010	2,453	1,039	62	3,554

Note: This table includes students at OSU-Tulsa, but does not include non-degree-seeking new freshmen and new concurrent high school students.

Student Profile books prior to Fall 2003 do not contain OSU-Tulsa students on this page.

Student Profile books prior to Fall 2006 contain new concurrent high school students on this page.

