

ENROLLMENT PROJECTIONS

OKLAHOMA STATE UNIVERSITY FALL SEMESTER HEADCOUNT ENROLLMENT AND PROJECTIONS

Enrollment at Oklahoma State University showed an increase for the Fall 2010 semester with a headcount of 23,522. This marks the highest enrollment in more than five years and only the third time in school history that enrollment has been more than 23,500. This continued increase in OSU enrollment was again buoyed by the recruitment efforts of the Office of Undergraduate Admissions. OSU welcomed 3,554 new freshmen, which constituted an increase of 406 over Fall 2009 and is our largest freshmen class since 1981. This number of new freshmen contributed to an overall increase in undergraduates of 348 which constitutes the first gain in undergraduate enrollment since Fall 2005. With continued large graduating classes, it bodes well for future years that our numbers of new freshmen and undergraduate transfers are providing necessary growth for the institution.

The projections for future years presented in this section are mathematical models based on past trends in applications, admitted students, and subsequent enrollments, as well as retention rates and forecasts of high school graduates. Forecasts for Oklahoma high school graduates show numbers fluctuating over the next four years. Because the OSU freshman class is made up of almost 70% Oklahoma residents, these forecasts are the primary source of projection numbers for freshman enrollment. The forecasts of Oklahoma high school graduates used in this section are based upon information from the Oklahoma State Department of Education and the State Regents for Higher Education. They assume that demographic trends such as immigration into and emigration out of the state will remain relatively constant.

Graduate enrollment at OSU was also once again a source of significant growth for the Fall 2010 semester with graduate student headcount increasing by 314 students to a total of 4,981. This represents an all-time OSU high for graduate enrollment. This continued increase is not surprising as the economy is still lagging and unemployment rates are still high.

In summary, several factors affect enrollment projections at OSU. Some of these factors depend on policy decisions originating with the Oklahoma State Regents for Higher Education and others depend on recruitment policies set by OSU administration. The impact of these policies, as well as changing admissions, enrollment, retention, scholarship, and recruiting practices, all have a role in determining future enrollment at Oklahoma State University. The Office of Institutional Research & Information Management will continue to monitor developments in these areas and assess their impact.

**OKLAHOMA HIGH SCHOOL GRADUATES AND ACT TEST-TAKERS
2000-2001 THROUGH 2009-2010 ACTUAL**

Year	HS Grads	ACT Takers	Percent
2000-2001	38,344	27,910	72.8%
2001-2002	37,699	26,717	70.9%
2002-2003	37,688	27,009	71.7%
2003-2004	38,109	26,556	69.7%
2004-2005	37,446	26,297	70.2%
2005-2006	37,940	26,425	69.6%
2006-2007	38,314	26,360	68.8%
2007-2008	38,915	27,131	69.7%
2008-2009	38,468	27,054	70.3%
2009-2010*	38,522	28,343	73.6%

Sources : Oklahoma High School Graduates - Projections, Oklahoma State Regents for Higher Education.

ACT Profile Report - State, Graduating Class 2010, Oklahoma.

* 2009-2010 high school graduate count is a projection.

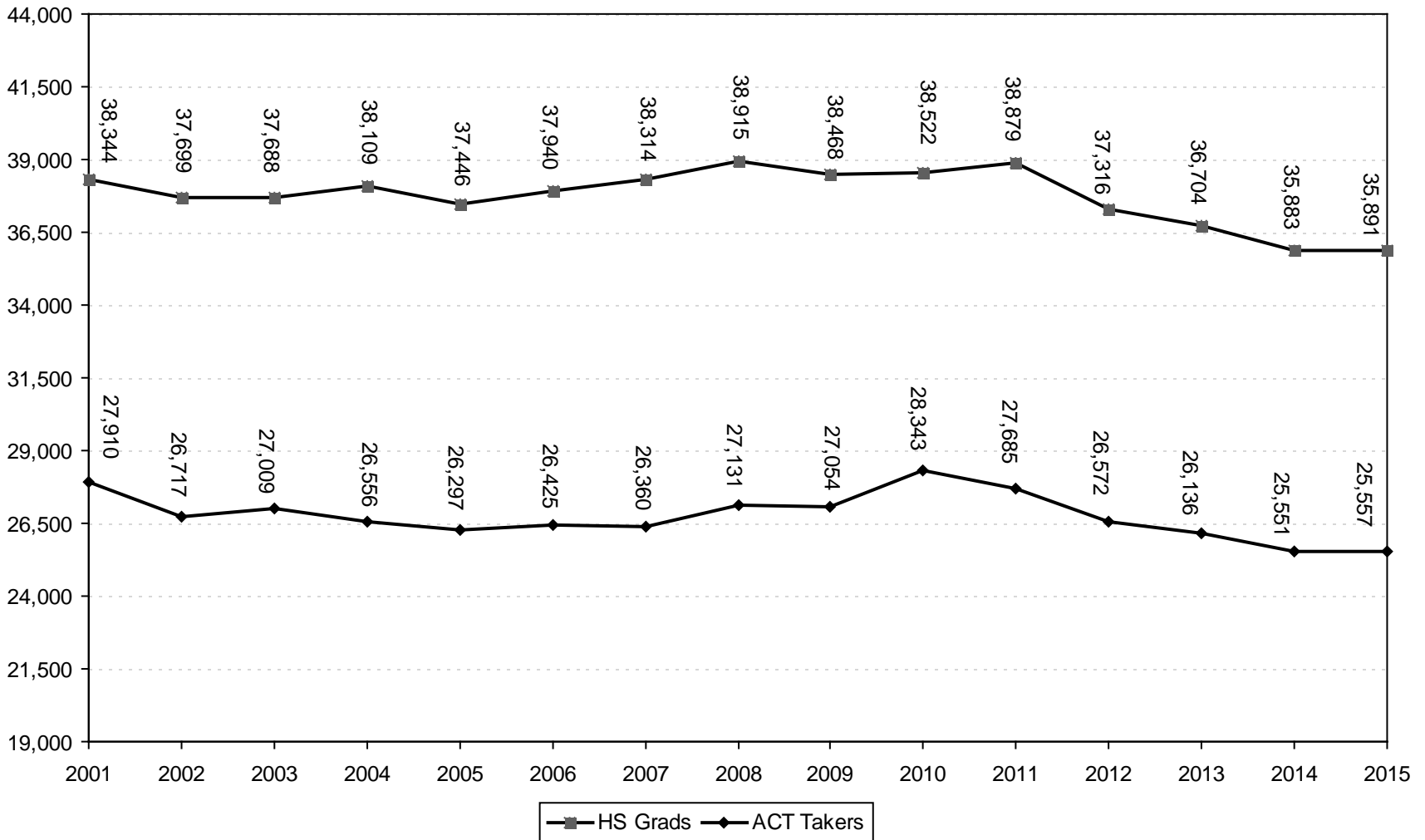
**PROJECTIONS OF OKLAHOMA HIGH SCHOOL GRADUATES
AND ACT TEST-TAKERS**

2010-2011	38,879	27,685	71.2%
2011-2012	37,316	26,572	71.2%
2012-2013	36,704	26,136	71.2%
2013-2014	35,883	25,551	71.2%
2014-2015	35,891	25,557	71.2%

Sources : Oklahoma High School Graduates - Projections, Oklahoma State Regents for Higher Education.

Projections of ACT test-takers are based on past patterns of participation.

HIGH SCHOOL GRADUATES IN OKLAHOMA 2000-2001 THROUGH 2008-2009 ACTUAL, WITH PROJECTIONS TO 2014-2015



Note: High school graduate numbers are revised based on the 2009 OSRHE Oklahoma High School Graduates – Projections chart. Projections from 2010 – 2015 are also from the 2009 OSRHE Oklahoma High School Graduates – Projections chart.

PROJECTION OF NEW FRESHMEN*
OKLAHOMA STATE UNIVERSITY
FALL SEMESTERS 2001 THROUGH 2010 (ACTUAL)
WITH PROJECTIONS THROUGH FALL 2015

Year	Resident	Nonresident US Citizen	International	Total
<u>Actual</u>				
2001	2,504	507	92	3,103
2002	2,570	560	71	3,201
2003	2,779	587	64	3,430
2004	2,526	687	51	3,264
2005	2,548	715	52	3,315
2006	2,500	692	44	3,236
2007	2,490	673	46	3,209
2008	2,357	683	33	3,073
2009	2,294	811	43	3,148
2010	2,453	1,039	62	3,554
<u>Projection</u>				
2011	2,571	908	49	3,528
2012	2,628	928	50	3,607
2013	2,617	925	50	3,592
2014	2,654	938	51	3,643
2015	2,751	972	53	3,775

Note: Projections are based on historical patterns of admitted new freshmen and enrolled new freshmen.

* New freshmen counts exclude concurrent high school students and non-degree-seeking students for all years listed.

**HEADCOUNT ENROLLMENT PROJECTIONS
OKLAHOMA STATE UNIVERSITY
FALL SEMESTERS 2001 THROUGH 2010 ACTUAL, WITH PROJECTIONS THROUGH FALL 2015**

Year	Freshman		Sophomore	Junior	Senior	Special Undergrad	Total Undergrad	Master	Doctorate	Special Graduate	Total Graduate	Total OSU-Stillwater	CVHS	OSU-T Undergrad	OSU-T Grad	Grand Total
	New	Other														
Actual																
2001	3,165	1,196	3,886	3,925	4,234	51	16,457	2,122	1,102	302	3,526	19,983	289	754	846	21,872
2002	3,265	1,208	3,944	4,115	4,458	49	17,039	2,340	1,180	298	3,818	20,857	292	1,004	839	22,992
2003	3,481	1,168	4,083	4,197	4,548	14	17,491	2,328	1,223	265	3,816	21,307	297	1,192	775	23,571
2004	3,263	1,199	4,056	4,266	4,604	105	17,493	2,204	1,201	382	3,787	21,280	296	1,296	754	23,626
2005	3,304	1,021	4,035	4,391	4,736	97	17,584	2,042	1,226	254	3,522	21,106	296	1,325	734	23,461
2006	3,221	922	4,099	4,383	4,658	109	17,392	2,005	1,239	291	3,535	20,927	308	1,345	727	23,307
2007	3,191	843	3,977	4,262	4,602	133	17,008	2,145	1,252	239	3,636	20,644	312	1,360	689	23,005
2008	3,054	749	3,795	4,280	4,517	241	16,636	2,212	1,321	268	3,801	20,437	319	1,350	662	22,768
2009	3,124	781	3,598	4,134	4,653	210	16,500	2,393	1,365	244	4,002	20,502	329	1,349	665	22,845
2010*	3,519	770	3,700	4,123	4,709	186	17,007	2,661	1,465	286	4,412	21,419	344	1,190	569	23,522
Projection																
2011	3,528	813	4,041	4,097	4,563	195	17,237	2,714	1,480	286	4,480	21,717	352	1,226	575	23,870
2012	3,607	805	4,105	4,346	4,447	195	17,505	2,768	1,495	286	4,549	22,054	352	1,263	581	24,250
2013	3,592	814	4,159	4,406	4,698	195	17,864	2,823	1,510	286	4,619	22,483	352	1,301	587	24,723
2014	3,643	813	4,155	4,457	4,759	195	18,022	2,879	1,525	286	4,690	22,712	352	1,340	593	24,997
2015	3,775	820	4,193	4,453	4,810	195	18,246	2,937	1,540	286	4,763	23,009	352	1,380	599	25,340

Note: New freshmen projections are based on historical patterns of admitted new freshmen and enrolled new freshmen. On-campus sophomore, junior, and senior projections are based on cohort survival rates.

* 32 sophomores and 3 juniors for Fall 2010 are in their first year of college and are thus listed in other tables as new freshmen.

