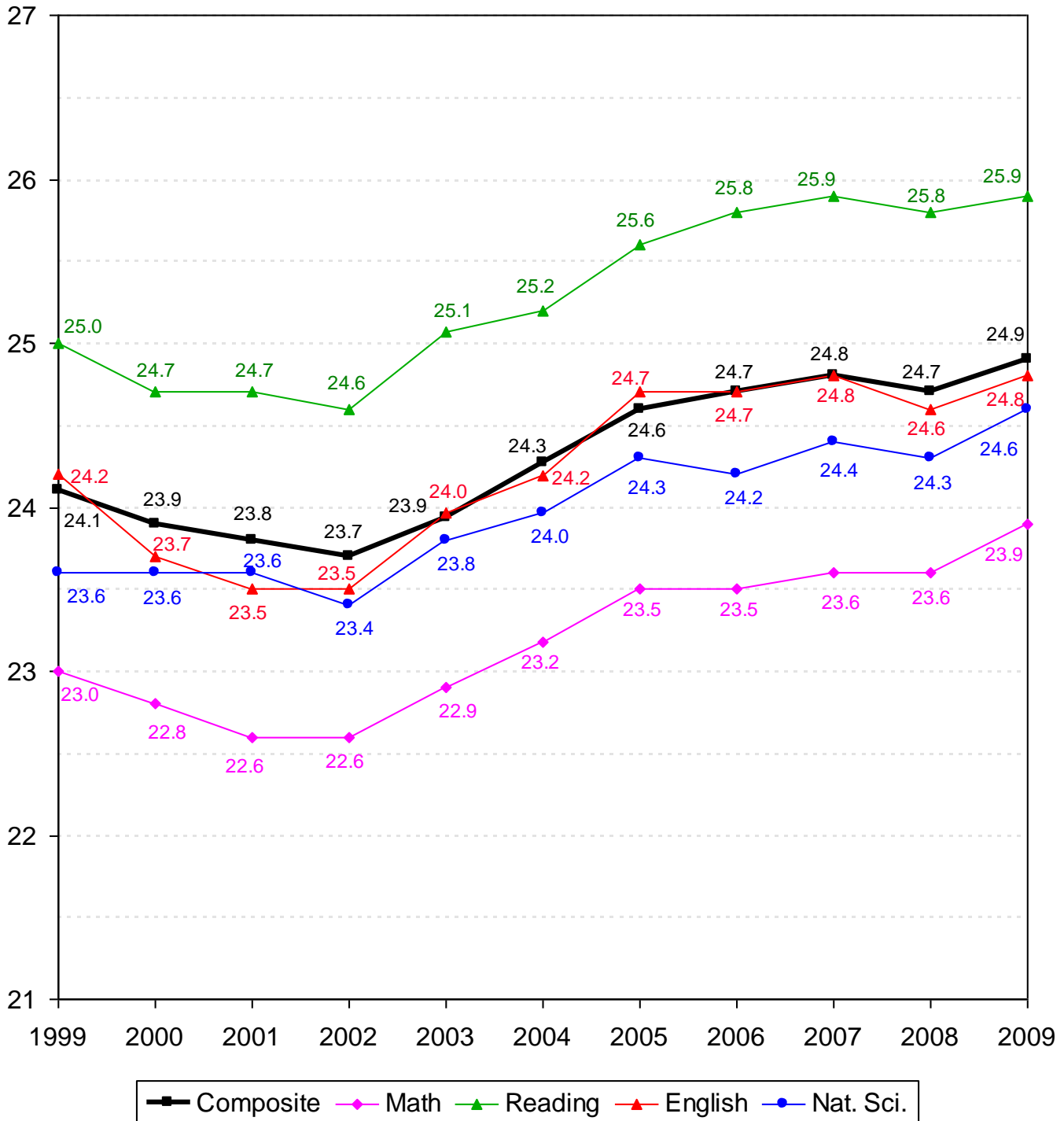


ACADEMIC INFORMATION

TEN-YEAR COMPARISON OF ACT SCORES FOR NEW FRESHMEN
OKLAHOMA STATE UNIVERSITY
FALL SEMESTERS 1999 THROUGH 2009



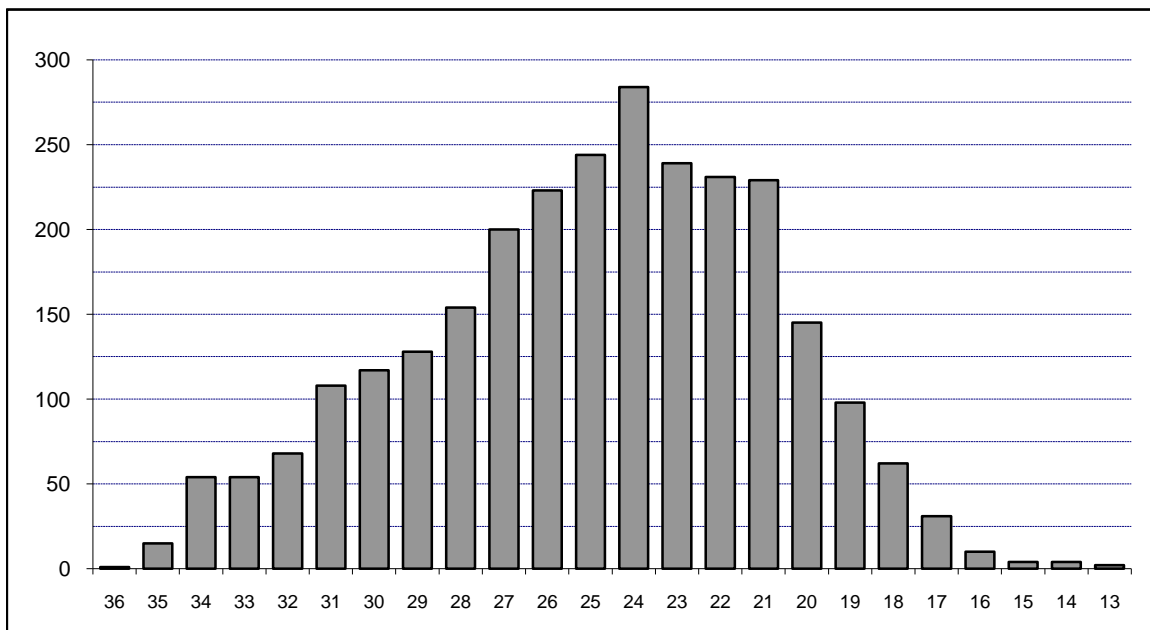
Note: Averages reflect the highest value for each subscore that a student received. Beginning in 2003, ACT composite scores are the average of the highest of each subscore received.

**COMPOSITE ACT AND SAT AVERAGES OF NEW FRESHMEN BY COLLEGE
OKLAHOMA STATE UNIVERSITY
FALL SEMESTER 2009**

College	ACT		SAT	
	Count	Composite	Count	Composite
Ag. Sciences & Natural Res.	340	24.8	29	1,202
Arts & Sciences	724	25.4	102	1,161
Spears School of Business	352	25.0	84	1,125
Education	233	23.8	28	1,128
Engineering & Architecture	504	27.4	82	1,229
Div. of Technology	42	25.4	10	1,167
Human Environmental Sci.	227	24.1	17	1,124
Overall College Average	2,422	25.4	352	1,168
University Academic Services	283	20.8	73	952
Overall Average	2,705	24.9	425	1,131

Note: Composite scores in this table are calculated using the highest subscores obtained for each student. If students have taken both the ACT and the SAT, only the higher score is reported.

**DISTRIBUTION OF NEW FRESHMEN BY COMPOSITE ACT SCORE
OKLAHOMA STATE UNIVERSITY
FALL SEMESTER 2009**



Composite ACT Score	Female	Male	Total	Percent	Cumulative Percent
36	0	1	1	0.04%	0.04%
35	2	13	15	0.55%	0.59%
34	16	38	54	2.00%	2.59%
33	19	35	54	2.00%	4.58%
32	35	33	68	2.51%	7.10%
31	56	52	108	3.99%	11.09%
30	56	61	117	4.33%	15.42%
29	57	71	128	4.73%	20.15%
28	69	85	154	5.69%	25.84%
27	97	103	200	7.39%	33.23%
26	119	104	223	8.24%	41.48%
25	125	119	244	9.02%	50.50%
24	162	122	284	10.50%	61.00%
23	134	105	239	8.84%	69.83%
22	141	90	231	8.54%	78.37%
21	133	96	229	8.47%	86.84%
20	100	45	145	5.36%	92.20%
19	58	40	98	3.62%	95.82%
18	33	29	62	2.29%	98.11%
17	21	10	31	1.15%	99.26%
16	7	3	10	0.37%	99.63%
15	2	2	4	0.15%	99.78%
14	3	1	4	0.15%	99.93%
13	1	1	2	0.07%	100.0%
Total	1,446	1,259	2,705	100.0%	100.0%

Note: ACT scores are only included in this table if they represent the highest test score available for the student. If the student's SAT score (converted to an ACT equivalent) is higher, then the ACT score is not included here.

**ACT AND SAT AVERAGES OF NEW FRESHMEN BY ETHNICITY AND GENDER
OKLAHOMA STATE UNIVERSITY
FALL SEMESTER 2009**

Ethnicity	ACT		SAT	
	Count	Composite	Count	Composite
White	2,250	25.2	333	1,150
African American	118	21.5	35	959
Native American	241	23.9	20	1,083
Hispanic	52	24.0	13	1,225
Asian	33	25.4	6	1,108
Gender				
Female	1,446	24.4	190	1,118
Male	1,259	25.5	235	1,141
Total	2,705	24.9	425	1,131

Note: Composite scores in this table are calculated using the highest subscores obtained for each student. If students have taken both the ACT and the SAT, only the higher score is reported.

**OKLAHOMA HIGH SCHOOL ACT PARTICIPATION STATISTICS
OKLAHOMA STATE UNIVERSITY
2004 THROUGH 2009**

	2004		2005		2006		2007		2008		2009	
High School Graduates in Oklahoma ¹	38,109		37,446		37,940		38,314		38,915		38,518	
Number of Oklahoma H.S. Students Taking ACT ^{2*}	26,556		26,297		26,425		26,360		27,131		27,054	
Total ACT Scores Received by OSU ^{2**}	9,468		9,506		9,256		9,167		8,135		7,564	
1st Choice / % of Scores Received	3,290	34.7%	3,405	35.8%	3,281	35.4%	3,421	37.3%	2,942	36.2%	2,671	35.3%
2nd - 6th Choices / % of Scores Received	6,178	65.3%	6,101	64.2%	5,975	64.6%	5,746	62.7%	5,193	63.8%	4,893	64.7%
Applications Received by OSU	6,633		6,533		6,730		6,415		6,406		7,561	
New Freshmen Accepted by OSU	5,881		5,719		5,853		5,651		5,702		6,537	
% of Applications Received	88.7%		87.5%		87.0%		88.1%		89.0%		86.5%	
New Freshmen Enrolled at OSU	3,264		3,315		3,236		3,209		3,073		3,148	
% of Freshmen Accepted	55.5%		58.0%		55.3%		56.8%		53.9%		48.2%	

48

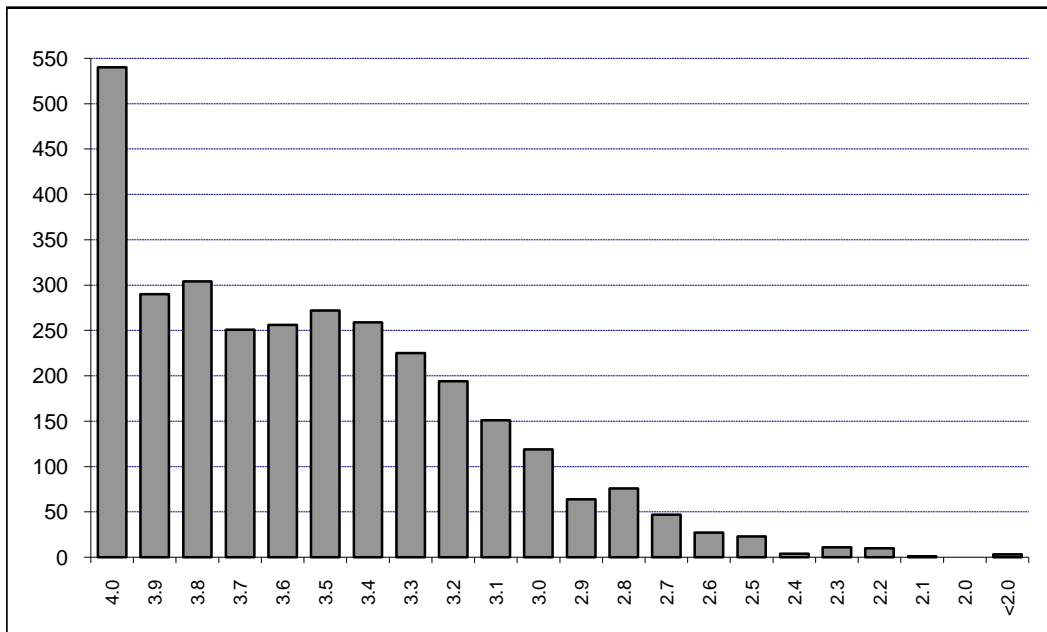
¹Source - 2007-2008 Student Data Report, Oklahoma State Regents for Higher Education (Projections for 2009)

²Source - ACT Profile Report - State, Graduating Class 2009, Oklahoma

*This includes only Oklahoma high school graduates who took the ACT prior to graduation in the year indicated.

**This includes only those students eligible for college enrollment in the fall semester of the year indicated and does not include multiple ACT scores for any one student. Student Profiles prior to Fall 2003 may include multiple ACT scores per person.

**DISTRIBUTION OF FRESHMEN HIGH SCHOOL GRADE POINT AVERAGES
OKLAHOMA STATE UNIVERSITY
FALL SEMESTER 2009**

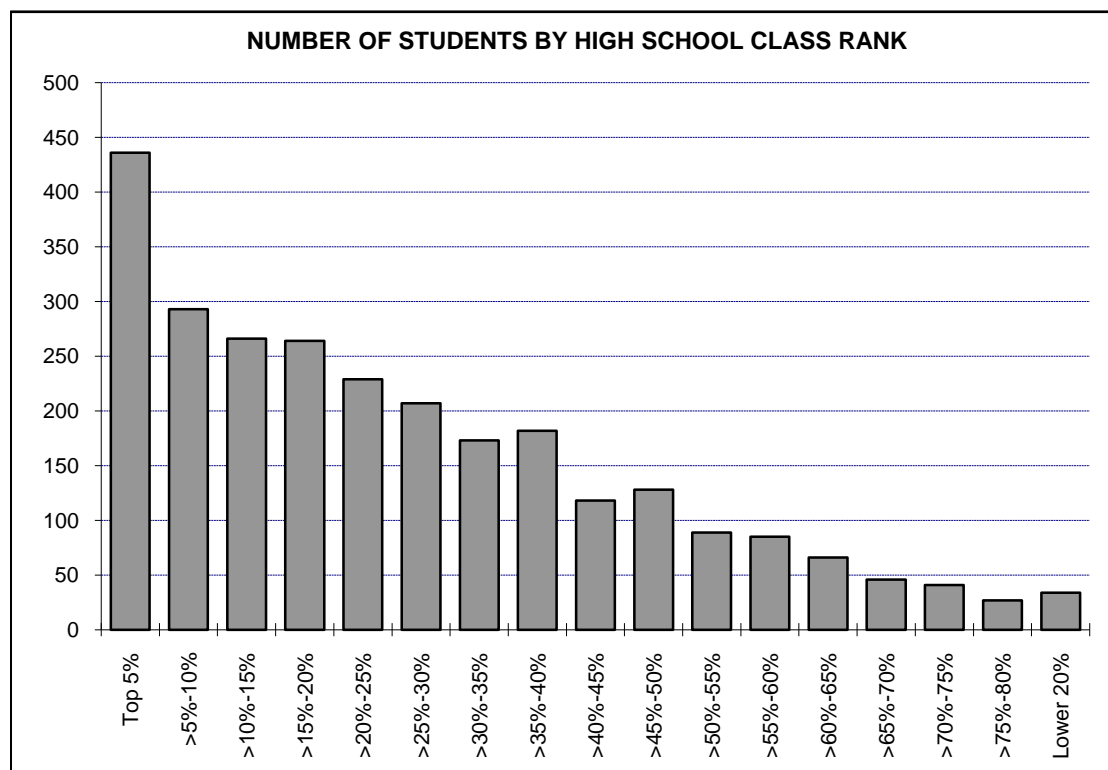


GPA	Number	Cumulative Number	Percent	Cumulative Percent
4.0	540	540	17.27%	17.27%
3.9	290	830	9.27%	26.54%
3.8	304	1,134	9.72%	36.26%
3.7	251	1,385	8.03%	44.29%
3.6	256	1,641	8.19%	52.48%
3.5	272	1,913	8.70%	61.18%
3.4	259	2,172	8.28%	69.46%
3.3	225	2,397	7.20%	76.65%
3.2	194	2,591	6.20%	82.86%
3.1	151	2,742	4.83%	87.69%
3.0	119	2,861	3.81%	91.49%
2.9	64	2,925	2.05%	93.54%
2.8	76	3,001	2.43%	95.97%
2.7	47	3,048	1.50%	97.47%
2.6	27	3,075	0.86%	98.34%
2.5	23	3,098	0.74%	99.07%
2.4	4	3,102	0.13%	99.20%
2.3	11	3,113	0.35%	99.55%
2.2	10	3,123	0.32%	99.87%
2.1	1	3,124	0.03%	99.90%
2.0	0	3,124	0.00%	99.90%
<2.0	3	3,127	0.10%	100.0%
Total	3,127	3,127	100.0%	100.0%

Note: 21 new freshmen (including international, home schooled, and adult admission students) did not supply a high school GPA.

The average high school GPA reported was 3.52. The average high school core GPA calculated was 3.53.

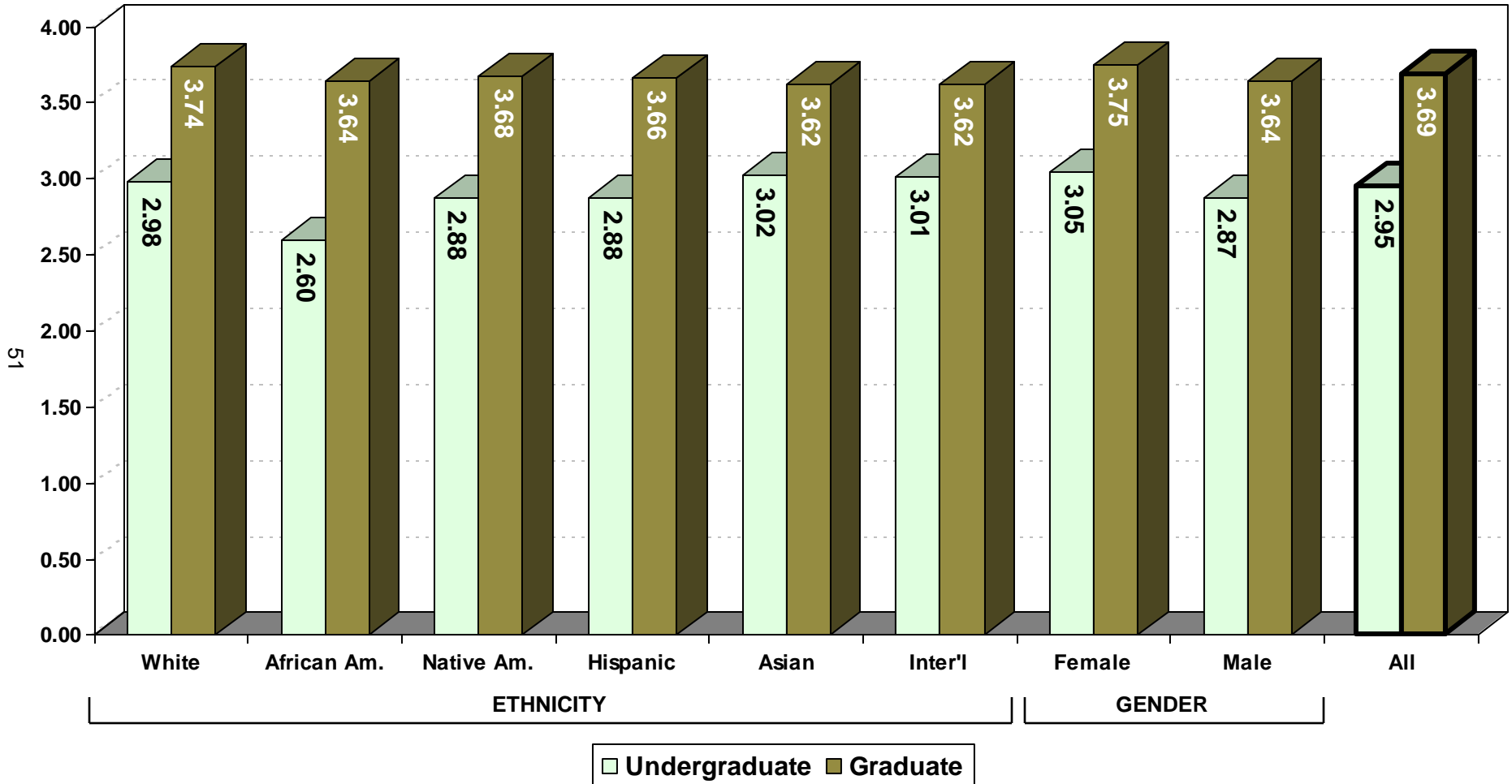
**RANK IN HIGH SCHOOL CLASS BY NUMBER OF NEW FRESHMEN & PERCENT IN EACH RANK
OKLAHOMA STATE UNIVERSITY
FALL SEMESTER 2009**



Rank	Number	Cumulative Number	Percent	Cumulative Percent
Top 5%	436	436	16.24%	16.24%
>5%-10%	293	729	10.92%	27.16%
>10%-15%	266	995	9.91%	37.07%
>15%-20%	264	1,259	9.84%	46.91%
>20%-25%	229	1,488	8.53%	55.44%
>25%-30%	207	1,695	7.71%	63.15%
>30%-35%	173	1,868	6.45%	69.60%
>35%-40%	182	2,050	6.78%	76.38%
>40%-45%	118	2,168	4.40%	80.77%
>45%-50%	128	2,296	4.77%	85.54%
>50%-55%	89	2,385	3.32%	88.86%
>55%-60%	85	2,470	3.17%	92.03%
>60%-65%	66	2,536	2.46%	94.49%
>65%-70%	46	2,582	1.71%	96.20%
>70%-75%	41	2,623	1.53%	97.73%
>75%-80%	27	2,650	1.01%	98.73%
Lower 20%	34	2,684	1.27%	100.0%

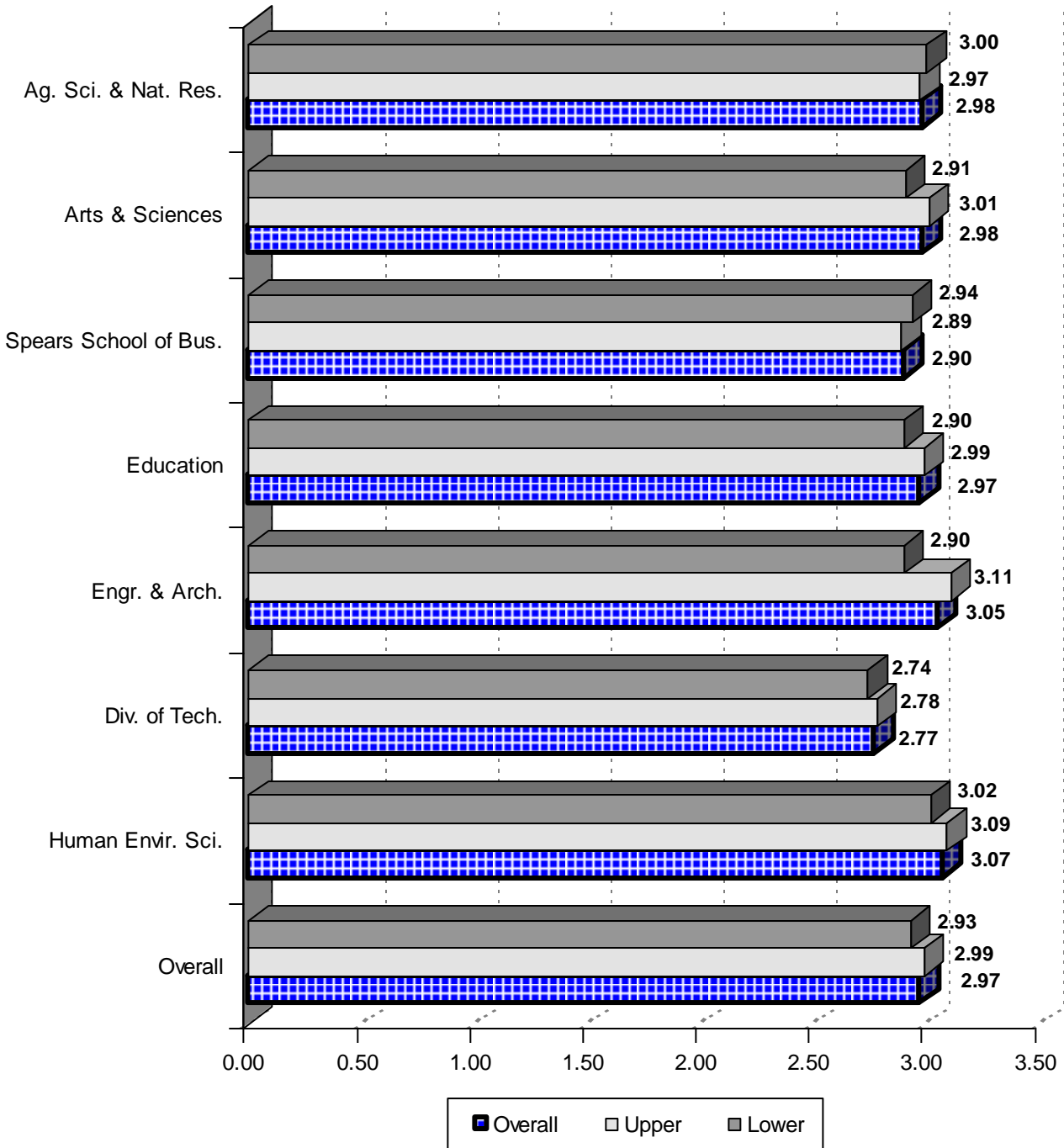
Note: 464 new freshmen (including international, home schooled, and adult admission students) did not supply a high school rank.

AVERAGE CUMULATIVE GRADE POINT AVERAGE BY ETHNICITY AND GENDER
OKLAHOMA STATE UNIVERSITY
FALL SEMESTER 2009



Note: The data presented above includes 12,874 undergraduates and 3,308 graduates for whom a cumulative GPA was reported. This chart excludes professional students, new transfers, and new freshmen, but includes students at OSU-Tulsa.

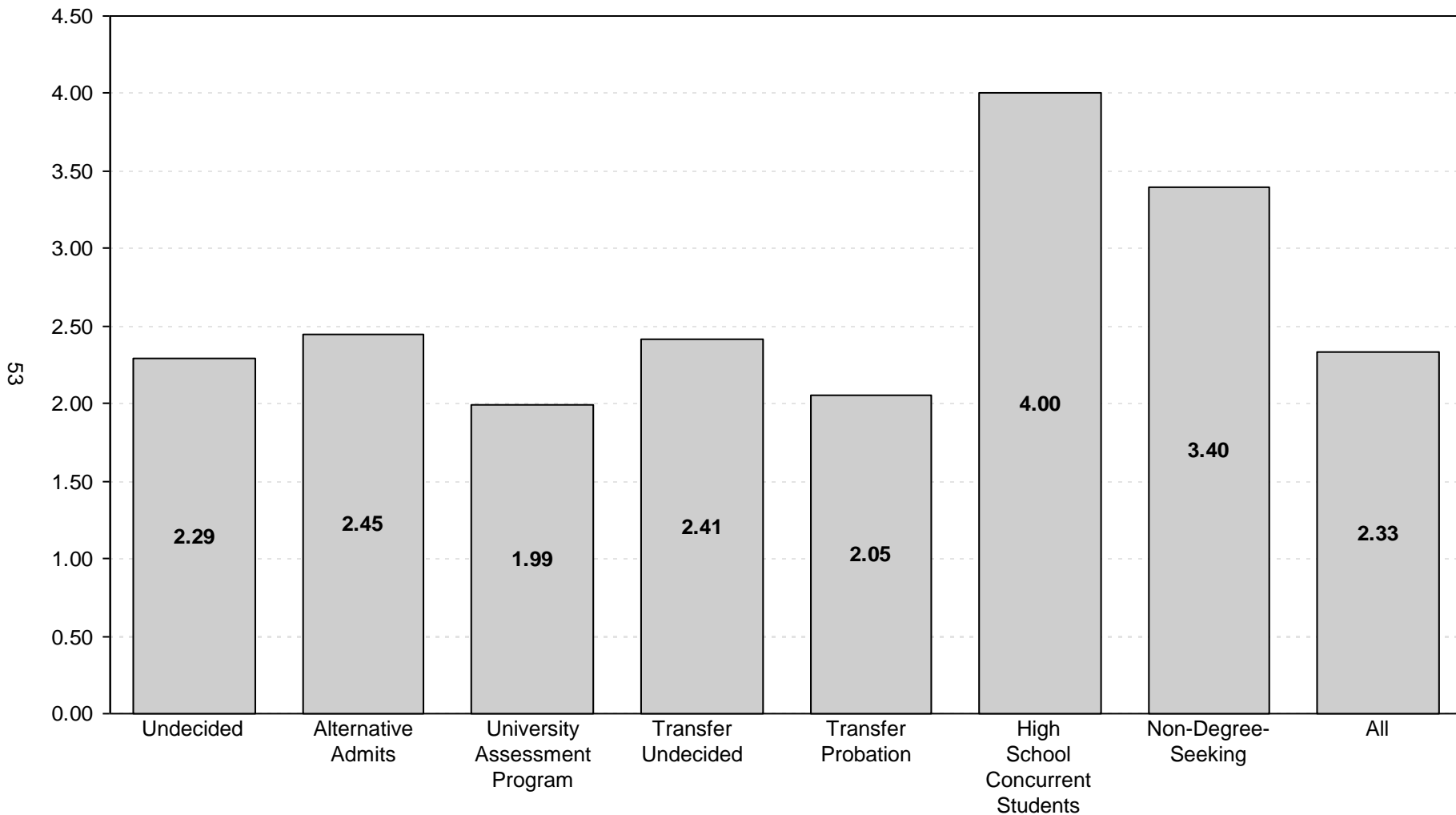
**AVERAGE CUMULATIVE GRADE POINT AVERAGE
OF UNDERGRADUATE STUDENTS BY COLLEGE AND DIVISION
OKLAHOMA STATE UNIVERSITY
FALL SEMESTER 2009**



Note: This chart includes 12,489 undergraduates enrolled for Fall 2009 for whom a cumulative GPA was reported. This chart excludes professional students, new freshmen, new transfers, and University Academic Services, but includes students enrolled at OSU-Tulsa.

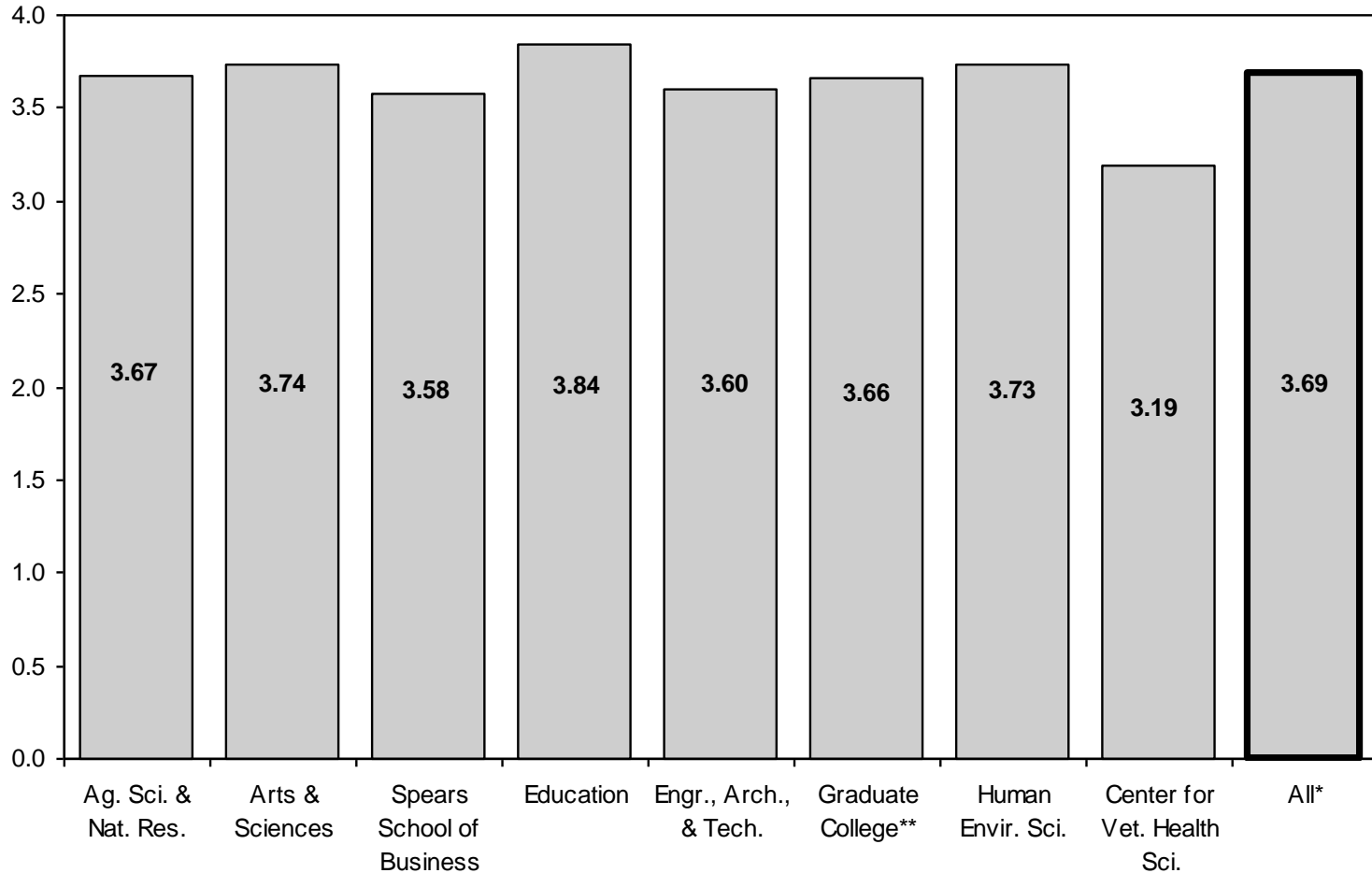
**AVERAGE CUMULATIVE GRADE POINT AVERAGE
OF UNIVERSITY ACADEMIC SERVICES STUDENTS**

**OKLAHOMA STATE UNIVERSITY
FALL SEMESTER 2009**



Note: This chart includes 385 students enrolled in University Academic Services in the Fall 2009 semester for whom a cumulative GPA was reported.

**AVERAGE CUMULATIVE GRADE POINT AVERAGE
OF GRADUATE STUDENTS BY COLLEGE
OKLAHOMA STATE UNIVERSITY
FALL SEMESTER 2009**

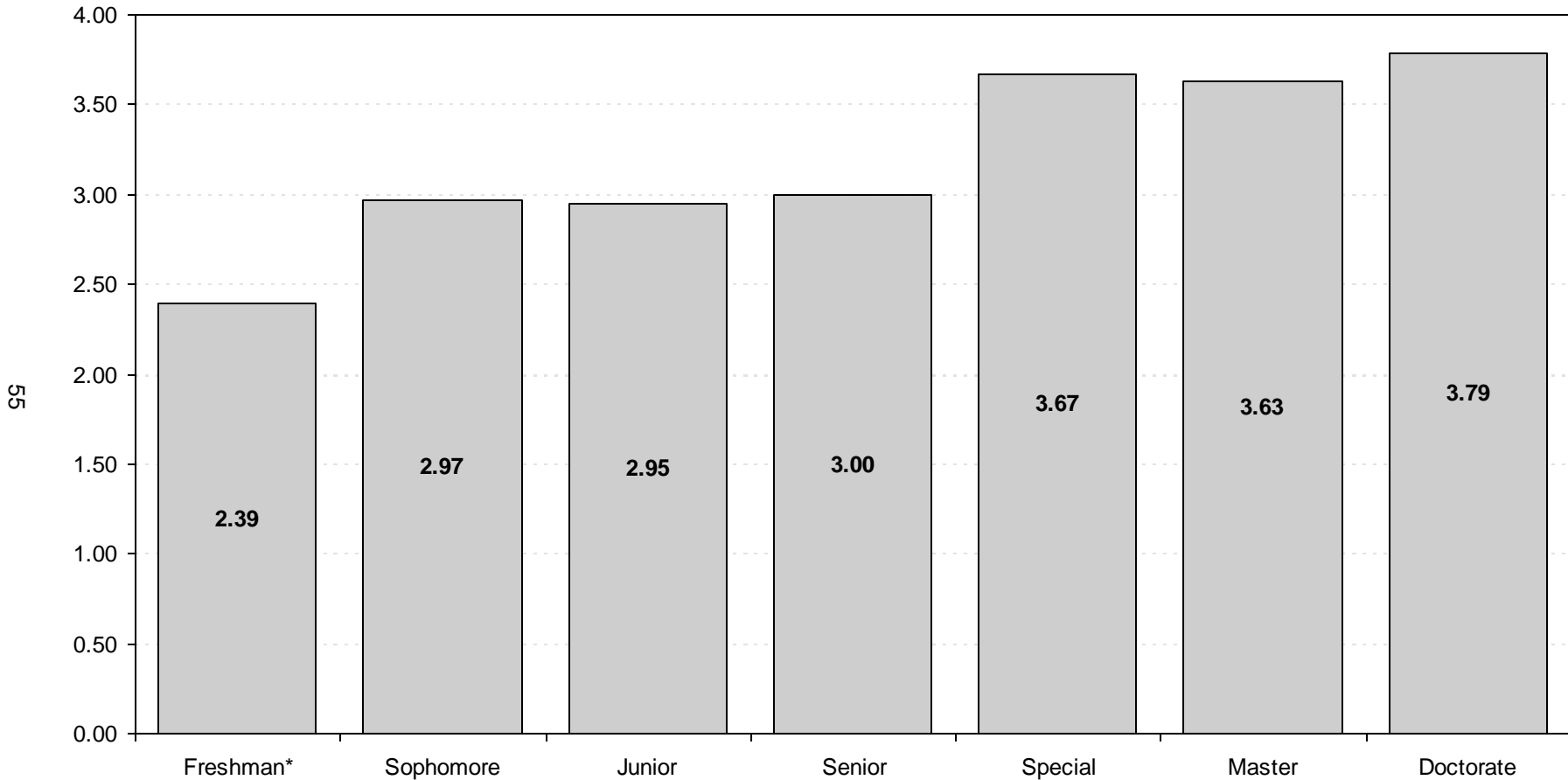


*Center for Veterinary Health Sciences' professional students are excluded from the overall average.

**Interdisciplinary graduate programs that do not have a specific area of specialization are reported in the Graduate College.

Note: This chart includes 3,308 graduate students and 237 professional students enrolled in the Fall 2009 semester for whom a cumulative GPA was reported. This chart does not include new transfer students but does include students enrolled at OSU-Tulsa.

**AVERAGE CUMULATIVE GRADE POINT AVERAGE
OF STUDENTS BY CLASS LEVEL
OKLAHOMA STATE UNIVERSITY
FALL SEMESTER 2009**



*Includes students enrolled previously who have earned fewer than 28 semester credit hours. This does not include Fall 2009 new freshmen.

Note: This chart includes 16,182 students enrolled in the Fall 2009 semester for whom a cumulative GPA was reported. This chart excludes professional students, new freshmen, and new transfer students, but includes students enrolled at OSU-Tulsa.