

ENROLLMENT PROJECTIONS

This page is left blank intentionally.

OKLAHOMA STATE UNIVERSITY FALL SEMESTER HEADCOUNT ENROLLMENT AND PROJECTIONS

Enrollment at Oklahoma State University showed a slight decrease for the Fall 2005 Semester with a headcount of 23,461. However, in addition to new programs offered at OSU-Tulsa, the NOC Gateway Program, as well as dual admission and enrollment programs with TCC should have a positive affect on enrollment in the coming years. Another positive note for OSU is the number of new freshmen increased over the previous year despite raising admission standards.

The projections in this section are mathematical models based on past enrollments, past applications, retention rates, and forecasts of high school graduates. Forecasts for Oklahoma high school graduates show numbers reflecting an overall decrease throughout the next 5 years. Because the OSU freshman class is made up of almost 80% Oklahoma residents, these forecasts are the primary source of projection numbers for freshman enrollment. The forecasts of Oklahoma high school graduates used in this section are based upon information from the Oklahoma State Department of Education and the State Regents for Higher Education. They assume that demographic trends such as immigration into and emigration out of the state will remain relatively constant.

While the majority of OSU freshman are Oklahoma residents, the number of out-of-state freshmen has shown continual increases over the past years. For the Fall 2005 Semester, the out-of-state freshmen enrollment shows an increase for the fifth consecutive year. This is due in large part to continual bolstering of recruiting efforts in the state of Texas.

As predicted in previous years, graduate enrollment at OSU decreased for the Fall 2005 Semester. This is due to a combination of a rebounding economy and improving job market, as well as a substantial increase in graduate degrees granted over the past several years.

In summary, several factors affect enrollment projections at OSU. Some of these factors depend on policy decisions originating with the Oklahoma State Regents for Higher Education and others depend on recruitment policies set by OSU administration. The impact of these policies, as well as changing admissions, enrollment, retention, scholarship, and recruiting practices, all have a role in determining future enrollment at Oklahoma State University. The Office of Institutional Research & Information Management will continue to monitor developments in these areas and assess their impact on enrollment.

**OKLAHOMA HIGH SCHOOL GRADUATES AND ACT TEST-TAKERS
1995-1996 THROUGH 2004-2005 ACTUAL**

Year	HS Grads	ACT Takers	Percent
1995-1996	33,744	22,897	67.9%
1996-1997	33,645	24,134	71.7%
1997-1998	36,254	25,303	69.8%
1998-1999	37,396	26,455	70.7%
1999-2000	38,512	27,850	72.3%
2000-2001	38,344	27,910	72.8%
2001-2002	37,699	26,717	70.9%
2002-2003	37,688	27,009	71.7%
2003-2004	38,109	26,556	69.7%
2004-2005*	36,905	26,297	71.3%

Sources : Student Data Report, Oklahoma State Regents for Higher Education, June 2005.

ACT High School Profile Report, HS Graduating Class 2005.

* 2004-2005 high school graduate count is a projection.

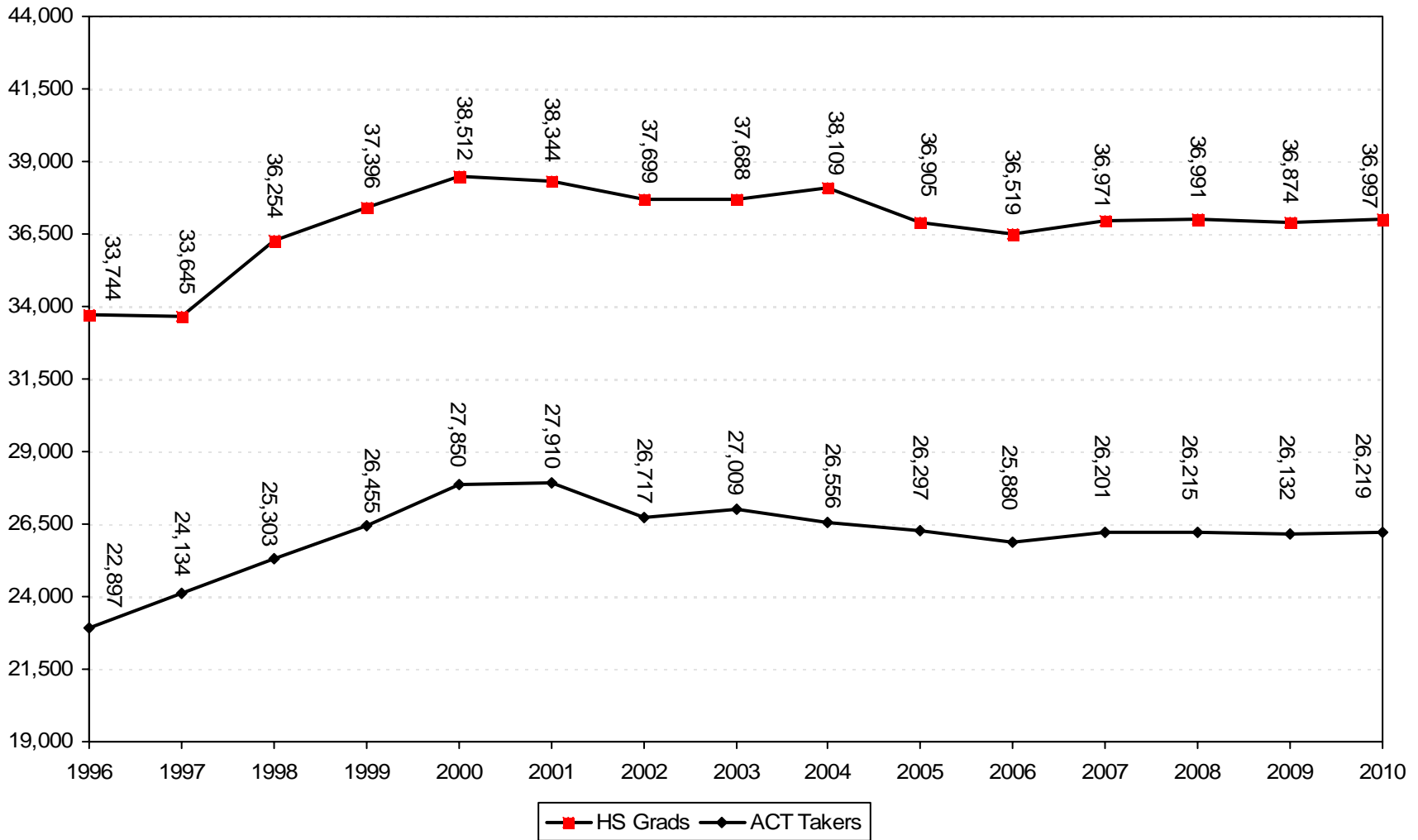
**PROJECTIONS OF OKLAHOMA HIGH SCHOOL GRADUATES
AND ACT TEST-TAKERS**

2005-2006	36,519	25,880	70.9%
2006-2007	36,971	26,201	70.9%
2007-2008	36,991	26,215	70.9%
2008-2009	36,874	26,132	70.9%
2009-2010	36,997	26,219	70.9%

Sources: Student Data Report, Oklahoma State Regents for Higher Education, June 2005.

Projections of ACT test-takers are based on past patterns of participation.

HIGH SCHOOL GRADUATES IN OKLAHOMA
1995-1996 THROUGH 2003-2004 ACTUAL, WITH PROJECTIONS TO 2009-2010



Note: High school graduate numbers are revised based on OSRHE Student Data Report, June 2005. Projections from 2005 – 2010 are also from the OSRHE Student Data Report, June 2005.

**PROJECTION OF NEW FRESHMEN
OKLAHOMA STATE UNIVERSITY
FALL SEMESTERS 1996 THROUGH 2005 (ACTUAL)
WITH PROJECTIONS THROUGH FALL 2010**

Year	Resident	Nonresident US Citizen	International	Total
<u>Actual</u>				
1996	2,056	326	60	2,442
1997	1,997	328	52	2,377
1998	2,221	398	57	2,676
1999	2,501	383	45	2,929
2000	2,644	379	53	3,076
2001	2,566	507	92	3,165
2002	2,634	560	71	3,265
2003	2,835	584	65	3,484
2004	2,526	687	51	3,264
2005	2,548	715	52	3,315
<u>Projection</u>				
2006	2,563	710	50	3,323
2007	2,595	710	50	3,355
2008	2,596	710	50	3,356
2009	2,588	710	50	3,348
2010	2,597	710	50	3,357

Notes: Projections are based on historical patterns of high school graduates and new freshmen enrollees.

Beginning in Fall 2000, non-degree-seeking new freshmen are excluded from these counts.
Beginning in Fall 2004, concurrent high school students are also excluded from these counts.

Prior to the Fall 2001 semester, out-of-state recruiting efforts were expanded and contributed to the substantial increase in out-of-state new freshmen.

**HEADCOUNT ENROLLMENT PROJECTIONS
OKLAHOMA STATE UNIVERSITY
FALL SEMESTERS 1996 THROUGH 2005 ACTUAL, WITH PROJECTIONS THROUGH FALL 2010**

Year	Freshman		Sophomore	Junior	Senior	Special Undergrad	Total Undergrad	Master	Doctorate	Special Graduate	Total Graduate	Total OSU-Stillwater	CVHS	OSU-T Undergrad	OSU-T Grad	Other Off-Campus	Grand Total
	New	Other															
Actual																	
1996	2,442	1,015	3,226	3,508	4,311	17	14,427	1,964	1,181	513	3,653	18,080	284	121	619	0	19,125
1997	2,377	1,047	3,308	3,683	4,168	22	14,519	1,955	1,196	474	3,658	18,177	289	109	680	42	19,201
1998	2,645	935	3,464	3,874	4,379	25	14,605	2,090	1,224	588	3,625	18,230	297	140	717	88	19,350
1999	2,904	1,173	3,543	3,923	4,235	36	15,322	1,987	1,137	492	3,902	19,224	294	552	716	95	20,466
2000	3,072	1,076	3,765	3,834	4,339	46	15,814	1,983	1,133	320	3,616	19,430	292	527	865	0	21,087
2001	3,165	1,196	3,886	3,925	4,234	51	16,132	2,122	1,102	302	3,436	19,568	289	747	846	0	21,252
2002	3,265	1,208	3,944	4,115	4,458	49	16,457	2,340	1,180	298	3,526	19,983	292	1,004	839	0	21,872
2003	3,481	1,168	4,083	4,197	4,548	14	17,491	2,328	1,223	265	3,816	21,307	297	1,192	775	0	23,571
2004	3,263	1,199	4,056	4,266	4,604	105	17,493	2,204	1,201	382	3,787	21,280	296	1,296	754	0	23,626
2005	3,304	1,021	4,035	4,391	4,736	97	17,584	2,042	1,226	254	3,522	21,106	296	1,325	734	0	23,461
Projection																	
2006	3,112	1,101	3,912	4,273	4,743	67	17,208	2,265	1,260	310	3,835	21,043	311	1,398	740	0	23,492
2007	3,018	1,101	3,862	4,212	4,628	67	16,888	2,294	1,277	314	3,885	20,773	320	1,538	740	0	23,371
2008	3,059	1,097	3,820	4,194	4,570	67	16,807	2,318	1,290	317	3,925	20,732	320	1,692	740	0	23,484
2009	3,095	1,104	3,847	4,156	4,551	67	16,820	2,339	1,301	320	3,960	20,780	320	1,861	740	0	23,701
2010	3,097	1,111	3,879	4,180	4,512	67	16,846	2,363	1,314	323	4,000	20,846	320	2,047	740	0	23,953

Note: New freshmen projections are based on historical patterns of admitted new freshmen and enrolled new freshmen. On-campus sophomore, junior, and senior projections are based on cohort survival rates. OSU-Tulsa undergraduates are projected to increase approximately 10% per year.

