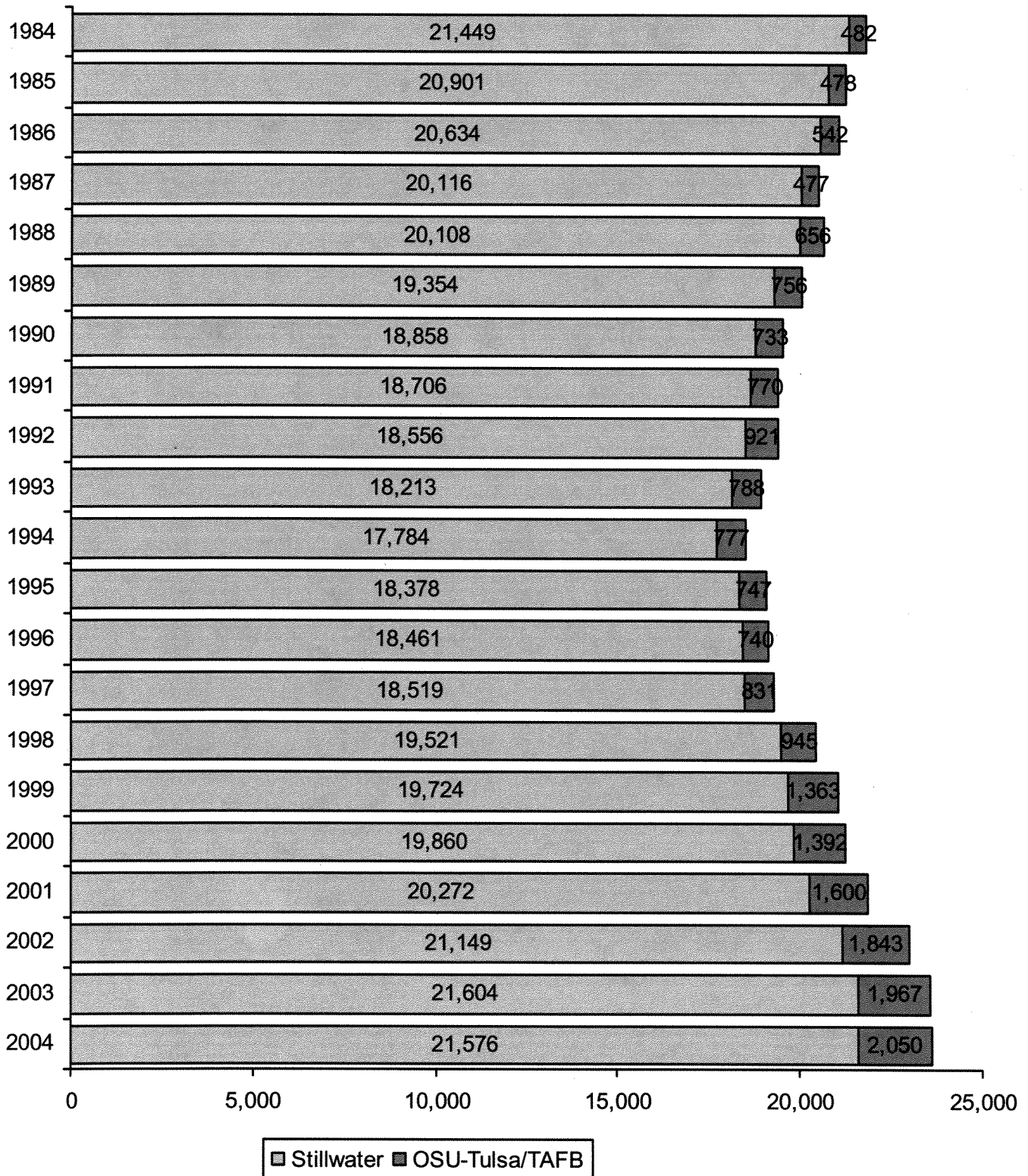
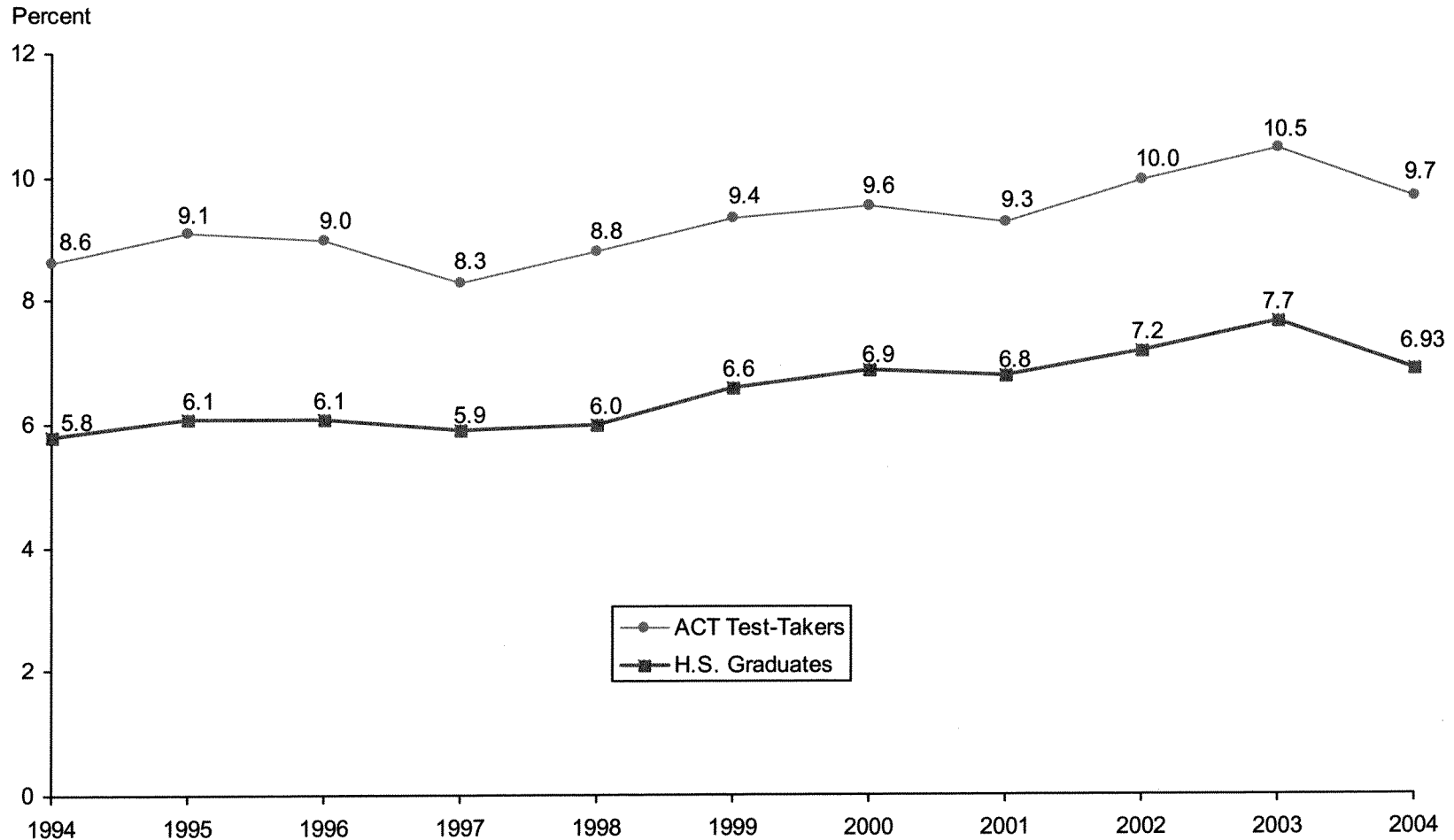


ENROLLMENT TRENDS

STILLWATER AND TULSA CAMPUS ENROLLMENT
OKLAHOMA STATE UNIVERSITY
FALL SEMESTERS 1984 THROUGH 2004



**OKLAHOMA STATE UNIVERSITY SHARE OF THE MARKET
RATIO OF BEGINNING RESIDENT FRESHMEN
TO OKLAHOMA HIGH SCHOOL SPRING GRADUATES AND ACT TEST-TAKERS
OKLAHOMA STATE UNIVERSITY
FALL SEMESTERS 1994 THROUGH 2004**



Note: Total Oklahoma high school graduates for 2004 = 37,283; total Oklahoma ACT test-takers = 26,556. The beginning resident freshman count for Fall 2004 includes OSU-Tulsa Students, excludes Non-Degree-Seeking Students and includes 61 First-time Concurrent Students. (See Page 43).

Source: Student Data Report, Oklahoma State Regents for Higher Education, and ACT High School Profile for Oklahoma, American College Testing.

**ENROLLMENT BY TYPE OF ADMISSION
OKLAHOMA STATE UNIVERSITY
FALL SEMESTERS 1994 THROUGH 2004**

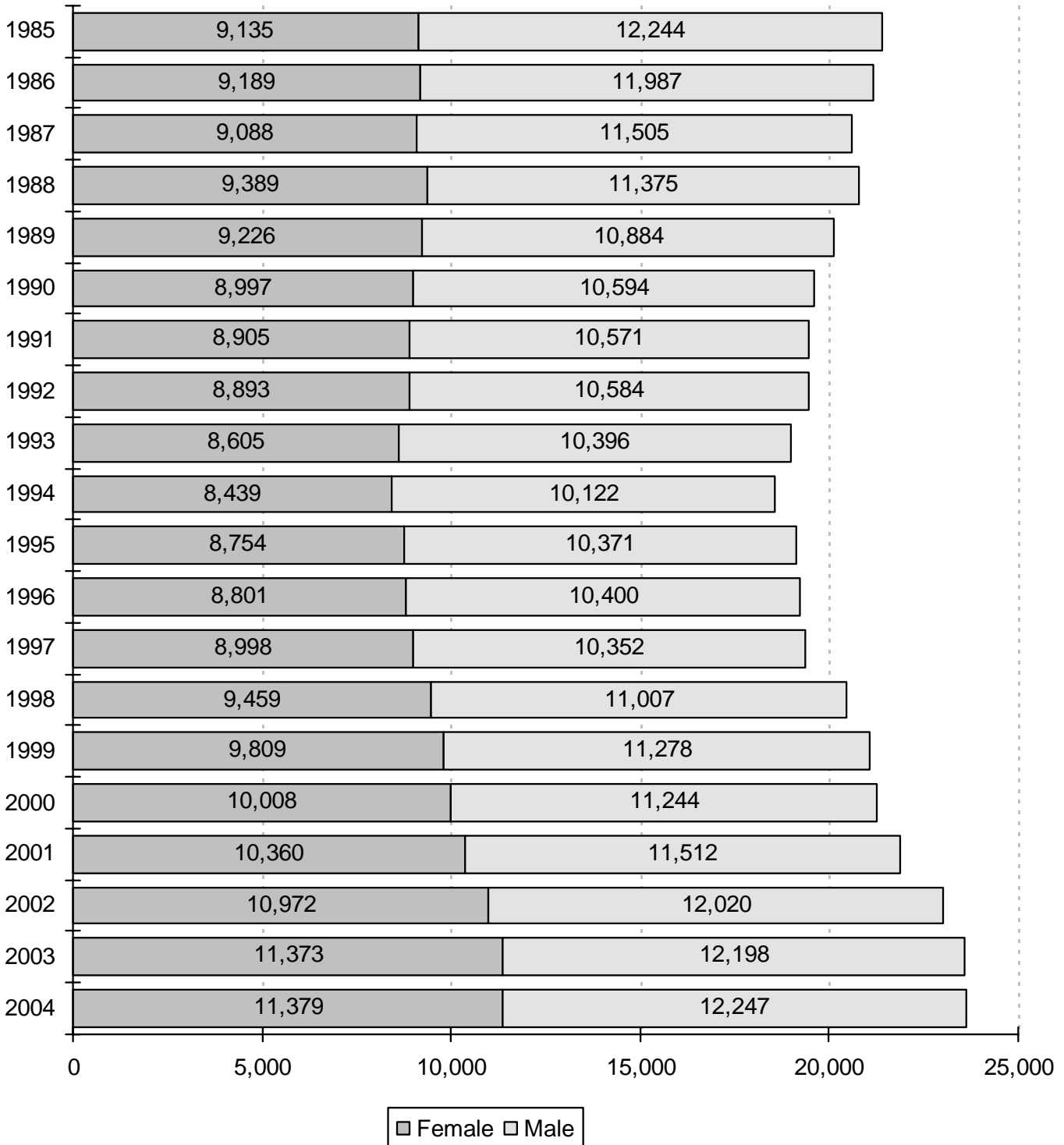
Fall	New Freshmen	% Inc / Dec	Continuing	% Inc / Dec	Readmission	% Inc / Dec	New Transfer	% Inc / Dec	Non-Degree	% Inc / Dec	Total	% Inc / Dec
1994	2,168		13,030		1,026		2,022		44		18,290	
1995	2,448	12.9%	13,164	1.0%	982	-4.3%	2,220	9.8%	36	-18.2%	18,850	3.1%
1996	2,412	-1.5%	13,241	0.6%	1,005	2.3%	2,208	-0.5%	51	41.7%	18,917	0.4%
1997	2,331	-3.4%	13,307	0.5%	1,082	7.7%	2,271	2.9%	70	37.3%	19,061	0.8%
1998	2,602	11.6%	13,998	5.2%	933	-13.8%	2,536	11.7%	100	42.9%	20,169	5.8%
1999	2,889	11.0%	15,302	9.3%	126	-86.5%	2,398	-5.4%	78	-22.0%	20,793	3.1%
2000	3,076	6.5%	14,509	-5.2%	971	670.6%	2,272	-5.3%	132	69.2%	20,960	0.8%
2001	3,165	2.9%	14,941	3.0%	961	-1.0%	2,363	4.0%	153	15.9%	21,583	3.0%
2002	3,265	3.2%	15,756	5.5%	1,089	13.3%	2,506	6.1%	84	-45.1%	22,700	5.2%
2003	3,488	6.8%	16,116	2.3%	941	-13.6%	2,675	6.7%	54	-35.7%	23,274	2.5%
2004*	3,325	-4.7%	16,275	1.0%	874	-7.1%	2,764	3.3%	92	70.4%	23,330	0.2%

35

Note: This table excludes Veterinary Medicine students (296 Vet Med students for Fall 2004). However, this table does include OSU-Tulsa figures for all years listed and will not match the figures for this page in the Student Profile books prior to Fall 2003. The percentage of increase or decrease in enrollment between two semesters is shown in the "% Inc / Dec" column. Example: There was a 6.8% increase in enrollment of new freshmen from Fall 2002 to Fall 2003.

* Fall 2004 New Freshmen counts include 61 First Time Concurrent High School Students. This total will not match the New Freshmen counts found in the other pages of this book. Concurrent Students have been included in order to make comparisons with the previous years on this page possible.

ENROLLMENT BY GENDER
OKLAHOMA STATE UNIVERSITY
FALL SEMESTERS 1985 THROUGH 2004



Note: This chart includes Veterinary Medicine students and OSU-Tulsa students for all years listed. Hence, these figures will not match the figures in the Student Profiles prior to 2003.

**ENROLLMENT BY CLASSIFICATION
OKLAHOMA STATE UNIVERSITY
FALL SEMESTERS 1984 THROUGH 2004**

Year	Freshmen	Sophomores	Juniors	Seniors	Special Undergrad	Graduate	Vet Med	On-Campus Total	Off-Campus OSU-T & TAFB	Grand Total
1984	4,433	4,125	4,400	4,821	30	3,363	277	21,449	482	21,931
1985	4,471	3,843	4,324	4,602	12	3,376	273	20,901	478	21,379
1986	4,560	3,814	4,131	4,340	10	3,507	272	20,634	542	21,176
1987	4,185	3,629	4,009	4,332	7	3,678	276	20,116	477	20,593
1988	4,485	3,761	3,824	4,187	4	3,571	276	20,108	656	20,764
1989	4,036	3,791	3,809	4,004	1	3,454	259	19,354	756	20,110
1990	3,526	3,787	3,693	4,037	0	3,561	254	18,858	733	19,591
1991	3,321	3,431	3,996	4,102	3	3,601	252	18,706	770	19,476
1992	3,251	3,294	3,678	4,285	20	3,759	269	18,556	921	19,477
1993	3,161	3,200	3,727	4,195	22	3,636	272	18,213	788	19,001
1994	3,187	3,034	3,612	4,215	41	3,424	271	17,784	777	18,561
1995	3,446	3,040	3,646	4,273	34	3,664	275	18,378	747	19,125
1996	3,427	3,226	3,508	4,311	47	3,658	284	18,461	740	19,201
1997	3,378	3,308	3,683	4,168	68	3,625	289	18,519	831	19,350
1998	3,535	3,464	3,874	4,379	70	3,902	297	19,521	945	20,466
1999	4,068	3,543	3,923	4,235	45	3,616	294	19,724	1,363	21,087
2000	4,148	3,765	3,834	4,339	46	3,436	292	19,860	1,392	21,252
2001	4,361	3,886	3,925	4,234	51	3,526	289	20,272	1,600	21,872
2002	4,473	3,944	4,115	4,458	49	3,818	292	21,149	1,843	22,992
2003	4,649	4,083	4,197	4,548	14	3,816	297	21,604	1,967	23,571
2004	4,462	4,056	4,266	4,604	105	3,787	296	21,576	2,050	23,626

Note: Effective 2000, Off-Campus OSU-T & Tinker Air Force Base column reflects OSU-Tulsa enrollment only.

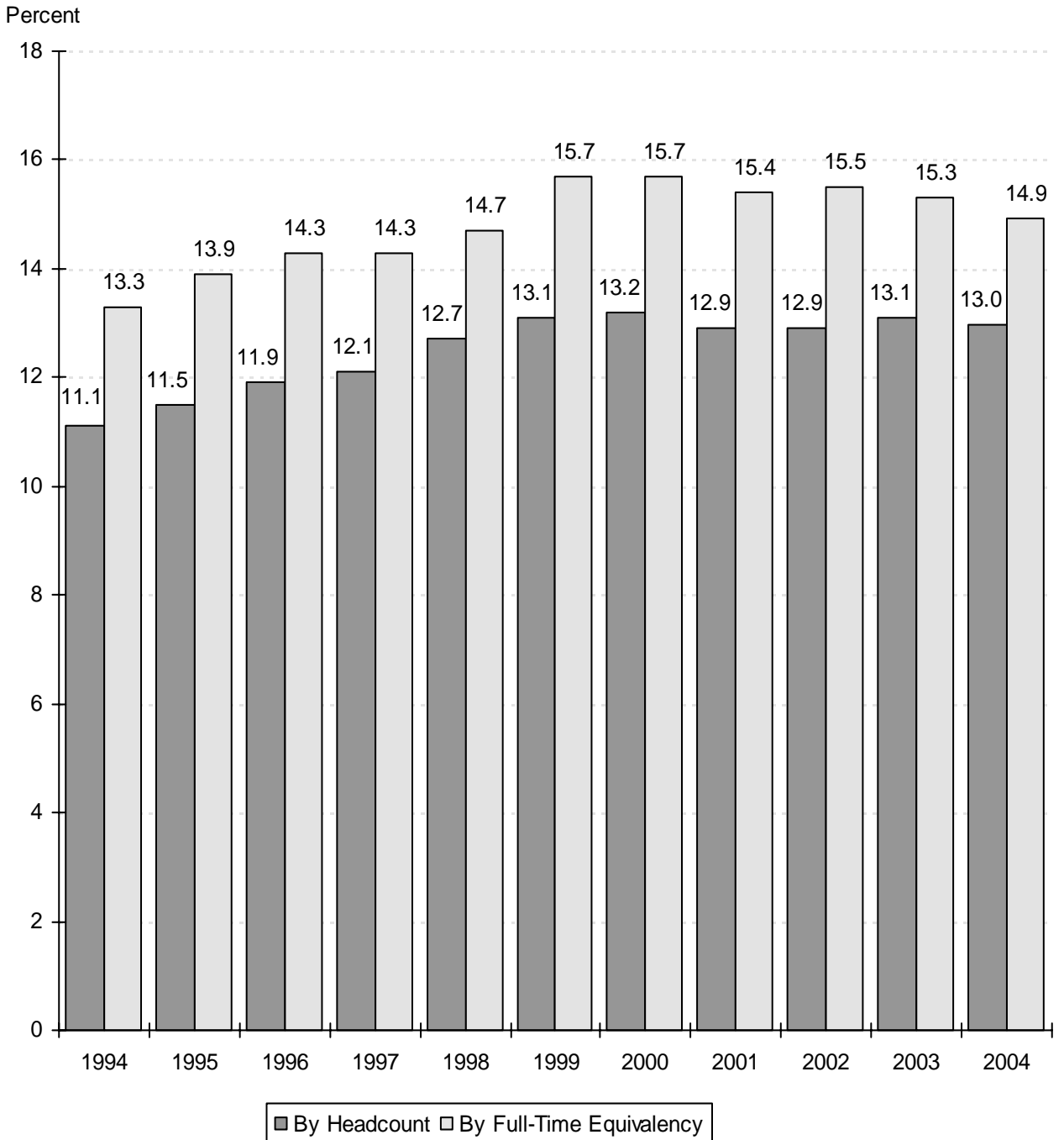
**ENROLLMENT BY ETHNICITY
OKLAHOMA STATE UNIVERSITY
FALL SEMESTERS 1994 THROUGH 2004**

Fall Semester	White		African American		Native American		Hispanic		Asian		International		Total
	Number	%	Number	%	Number	%	Number	%	Number	%	Number	%	
1994	14,546	78.4%	436	2.3%	1,064	5.7%	289	1.6%	375	2.0%	1,851	10.0%	18,561
1995	14,951	78.2%	472	2.5%	1,189	6.2%	280	1.5%	368	1.9%	1,865	9.8%	19,125
1996	14,959	77.9%	494	2.6%	1,223	6.4%	299	1.6%	355	1.8%	1,871	9.7%	19,201
1997	14,997	77.5%	537	2.8%	1,213	6.3%	303	1.6%	374	1.9%	1,926	10.0%	19,350
1998	15,856	77.5%	560	2.7%	1,377	6.7%	332	1.6%	363	1.8%	1,978	9.7%	20,466
1999	16,390	77.7%	694	3.3%	1,453	6.9%	384	1.8%	366	1.7%	1,800	8.5%	21,087
2000	16,507	77.7%	709	3.3%	1,555	7.3%	347	1.6%	366	1.7%	1,768	8.3%	21,252
2001	16,753	76.6%	720	3.3%	1,656	7.6%	400	1.8%	379	1.7%	1,964	9.0%	21,872
2002	17,475	76.0%	766	3.3%	1,784	7.8%	415	1.8%	375	1.6%	2,177	9.5%	22,992
2003	17,905	76.0%	778	3.3%	1,838	7.8%	444	1.9%	371	1.6%	2,235	9.5%	23,571
2004	17,943	75.9%	918	3.9%	1,896	8.0%	447	1.9%	389	1.6%	2,033	8.6%	23,626

Note: This table includes Veterinary Medicine students and OSU-Tulsa students for all years listed. Student Profile books prior to Fall 2003 do not contain OSU-Tulsa students on this page.

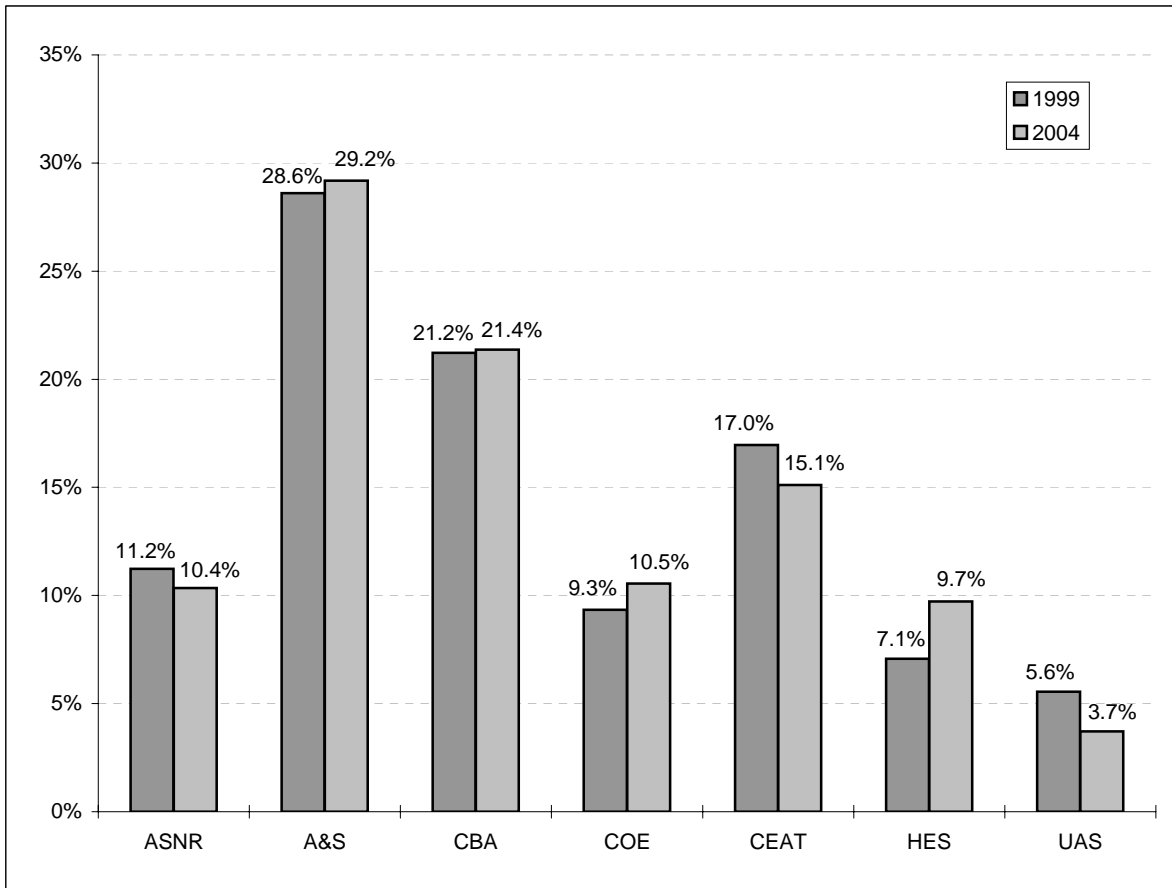
**OSU ENROLLMENT AS A PERCENT OF TOTAL ENROLLMENT
IN THE OKLAHOMA STATE SYSTEMS (PUBLIC)**

**OKLAHOMA STATE UNIVERSITY
FALL SEMESTERS 1994 THROUGH 2004**



Source: Enrollment Report for Oklahoma Higher Education, Oklahoma State Regents for Higher Education.

**COMPARISON OF DISTRIBUTION OF UNDERGRADUATE MAJORS BY COLLEGE
OKLAHOMA STATE UNIVERSITY
FALL SEMESTERS 1999 AND 2004**



**UNDERGRADUATE MAJORS BY COLLEGE
OKLAHOMA STATE UNIVERSITY
FALL SEMESTERS 1999 THROUGH 2004**

Year	Ag. Sci. & Nat. Res.	Arts & Sciences	Business Admin.	Education	Engr. Arch., & Tech.	Human Envir. Sci.	Univ. Acad. Services	Total
1999	1,821	4,636	3,438	1,513	2,748	1,147	900	16,203
2000	1,858	4,918	3,648	1,378	2,632	1,306	919	16,659
2001	1,883	5,039	3,772	1,498	2,723	1,354	942	17,211
2002	1,942	5,123	3,810	1,780	2,858	1,573	957	18,043
2003	1,941	5,332	4,043	1,836	2,885	1,723	923	18,683
2004	1,945	5,484	4,016	1,982	2,838	1,826	698	18,789

Note: Students are reported in the college in which they are enrolled. This page includes students enrolled in OSU-Tulsa. Student Profile books prior to Fall 2003 do not contain OSU-Tulsa students on this page.

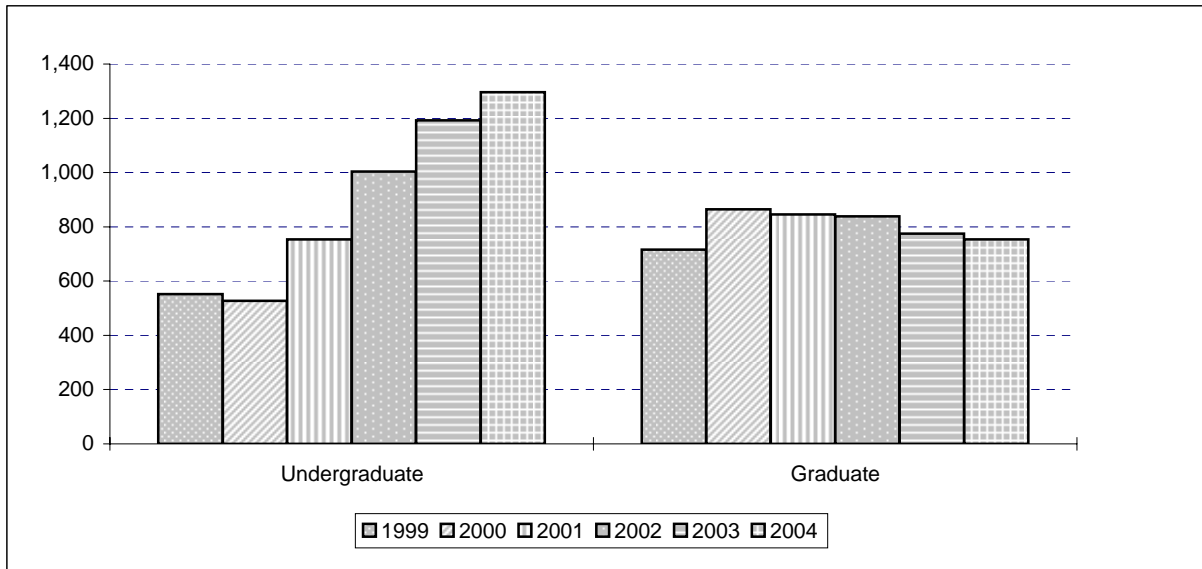
**ENROLLMENT CHANGES
OKLAHOMA STATE UNIVERSITY
FALL SEMESTERS 1999 AND 2004**

	1999	2004	% Change
<u>UNDERGRADUATE MAJORS</u>			
Agricultural Sciences & Natural Resources	1,821	1,945	6.8%
Arts & Sciences	4,636	5,484	18.3%
Business Administration	3,438	4,016	16.8%
Education	1,513	1,982	31.0%
Engineering, Architecture & Technology	2,748	2,838	3.3%
Human Environmental Sciences	1,147	1,826	59.2%
University Academic Services	900	698	-22.4%
<u>AGE</u>			
18 & Under	1,635	1,693	3.5%
19	2,611	3,138	20.2%
20	2,745	3,208	16.9%
21	2,804	3,355	19.7%
22	2,488	2,868	15.3%
23-29	5,404	6,068	12.3%
30-39	1,914	1,842	-3.8%
40 & Over	1,486	1,454	-2.2%
Unknown	0	0	
<u>CLASSIFICATION</u>			
New Freshmen*	2,916	3,263	11.9%
Other Freshmen	1,214	1,224	0.8%
Sophomores	3,579	4,171	16.5%
Juniors	4,030	4,767	18.3%
Seniors	4,407	5,211	18.2%
Specials	940	743	-21.0%
Graduates	3,707	3,951	6.6%
Veterinary Medicine	294	296	0.7%
<u>RESIDENT STATUS</u>			
In-State	16,627	18,136	9.1%
Out-of-State	2,678	3,457	29.1%
International	1,782	2,033	14.1%
<u>ETHNICITY</u>			
White	16,390	17,943	9.5%
African American	694	918	32.3%
Native American	1,453	1,896	30.5%
Hispanic	384	447	16.4%
Asian	366	389	6.3%
International	1,800	2,033	12.9%
<u>GENDER</u>			
Female	9,809	11,379	16.0%
Male	11,278	12,247	8.6%
OVERALL ENROLLMENT	21,087	23,626	12.0%

Note: This table includes Veterinary Medicine students and OSU-Tulsa students. Student Profile books prior to Fall 2003 do not contain OSU-Tulsa students on this page.

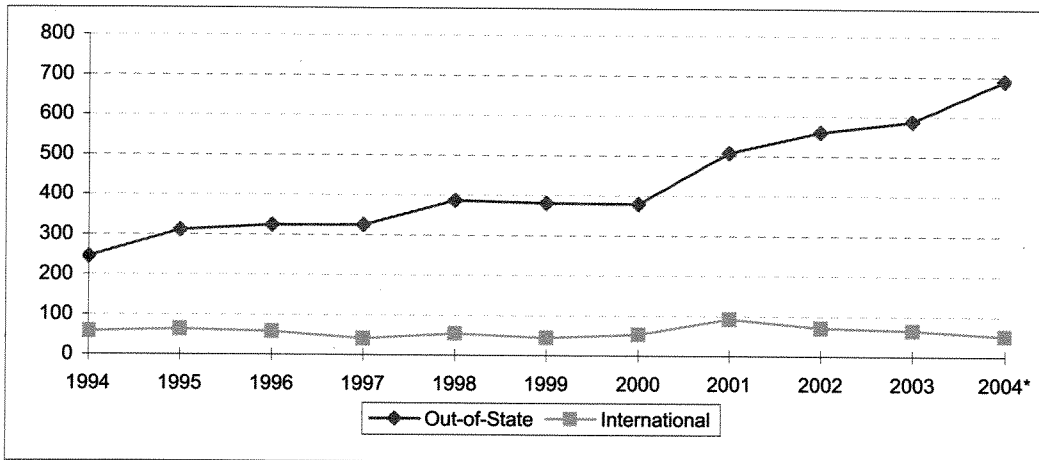
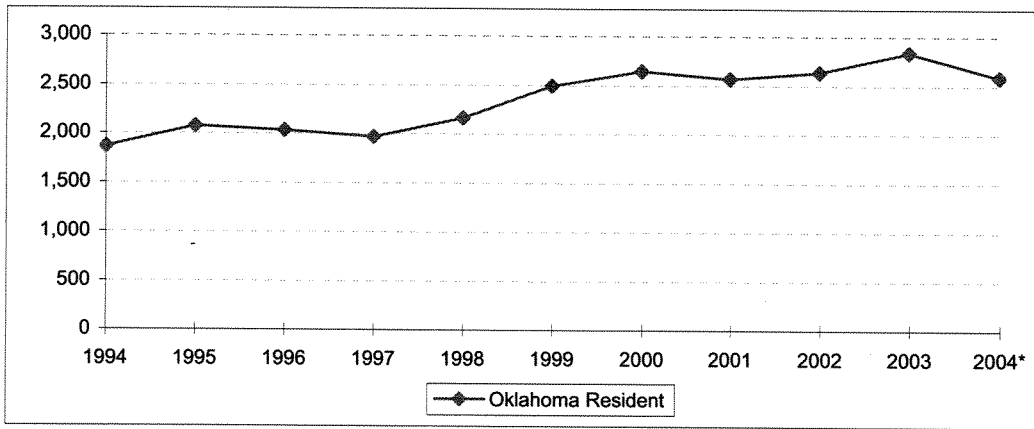
* 1 student classified in this table as a Sophomore for 2004 is in their first year of college, and thus is listed in other tables as a new freshmen.

**ENROLLMENT CHANGES
OKLAHOMA STATE UNIVERSITY AT TULSA
FALL SEMESTERS 1999 THROUGH 2004**



Classification	1999	2000	2001	2002	2003	2004	% Change 2003 to 2004
Undergraduate	552	527	754	1,004	1,192	1,296	8.7%
Freshman	47	16	21	34	46	25	-45.7%
Sophomore	34	45	87	88	112	115	2.7%
Junior	105	178	247	389	440	501	13.9%
Senior	151	204	297	458	554	607	9.6%
Special	215	84	102	35	40	48	20.0%
Graduate	716	865	846	839	775	754	-2.7%
Special	169	270	217	203	188	208	10.6%
Master	473	504	527	542	507	435	-14.2%
Doctorate	74	91	102	94	80	111	38.8%
Grand Total	1,268	1,392	1,600	1,843	1,967	2,050	4.2%

**NEW FRESHMEN ENROLLMENT BY RESIDENCY
OKLAHOMA STATE UNIVERSITY
FALL SEMESTERS 1994 THROUGH 2004**



Fall Semester	Oklahoma Resident	Out-of-State	International	Total
1994	1,865	245	58	2,168
1995	2,074	311	63	2,448
1996	2,030	324	58	2,412
1997	1,965	325	41	2,331
1998	2,162	386	54	2,602
1999	2,492	380	44	2,916
2000	2,644	379	53	3,076
2001	2,566	507	92	3,165
2002	2,634	560	71	3,265
2003	2,836	587	65	3,488
2004*	2,585	689	51	3,325

Note: This table includes students at OSU-Tulsa, but does not include Non-Degree-seeking New Freshman. Student Profile books prior to Fall 2003 do not contain OSU-Tulsa students on this page.
 * Fall 2004 counts include 59 First Time Concurrent Students who are Oklahoma Residents, and 2 First Time Concurrent Students who are Out-of-State Residents. The First Time Concurrent Students have been included for Fall 2004 since it is included in the Fall 1994 to Fall 2003 New Freshmen counts on this page.
 The New Freshman count on this page will not match the counts found on other pages.